

TUNGSRAM™

Innovation is our heritage
EST.1896



European Producer
Lighting Solutions

LED Indoor

Product catalogue

2019

tungsr.com





Joerg Bauer
President & Chief Executive Officer

Dear Partner,

Welcome to Tungsram and a bright future for our respective businesses.

With a history that stretches back to 1896, the Tungsram name has always been highly respected. This heritage has now entered an exciting new phase following our acquisition of GE Lighting's Europe, Middle East, Africa and Turkey operation, together with GE's Global Automotive Lighting business.

So what does this mean for you, our valued partners? I firmly believe that the revival of the Tungsram brand represents a major opportunity for all of us, a chance to move forward with confidence and increase our share of national and international markets.

We will of course continue to offer a comprehensive range of market-leading lighting solutions, from traditional technologies such as HID, LFL, CFL, Halogen and Specialty lamps, to ultra-efficient, high performance indoor and outdoor LED solutions. Our renowned automotive lighting ranges include basic and premium lamps for original equipment and aftermarket, and we supply products for all major auto brands.

Our new company will drive forward the design and development of all kinds of light sources, from traditional technologies to state-of-the-art LED products, and will secure our position as a global force in lighting solutions.

In addition, we will work towards ever more efficient and advanced solutions in areas such as human centric light, energy optimisation and system intelligence.

Tungsram was the most innovative Hungarian industrial company of the last century and, by applying this attitude to a 21st century business, we will deliver the solutions, products and services that your customers are looking for.

These are exciting times for Tungsram. We are committed to enhancing the support we offer our partners – following the principle of “What can we do for your success?” – and we look forward to continuing our journey together.

Thank you.
Joerg

Contents

4	Introduction
6	LED Retrofit Solutions
12	LED Lamps
26	LED Tubes
28	LED Plug-in
32	LED Indoor Solutions
40	Fundamental Fixtures
50	Industrial Fixtures
54	LED Drivers
58	Case studies

Tungsram
name back in
the spotlight



“Tungram was the most innovative Hungarian industrial company of the last century and, by applying this attitude to a 21st century business, we will secure our position as a global force in lighting solutions. Our brand promise is to deliver high quality, long-lasting light sources, developed and produced with superior technical knowledge to provide a comfortable, optimal light for work and leisure.”

Tungram Operations

An iconic name returns

to the market in April 2018, as a Hungary based innovative and global brand.

We will continue to be represented as a premium European brand with design, development and manufacturing in Europe, and a commitment to continue and expand its outreach. We would like to strengthen our current position, and we are planning serious development in LED solutions. Tungram continues existing design, production and R&D operations, making use of computer-managed and controlled processes, fully automated production lines, and certified quality assurance systems.

European standards



Same trusted colleagues



Expertise in lighting

GE Lighting's infrastructure entirely retained

5000 employees



Up-to-date technology and certified quality assurance



5 factories in Hungary





LED Retrofit Solutions



Choose the performance that's right for you

We've made selecting the right product easier than ever, with a choice of three LED Retrofit Lamp ranges. All offer an attractive combination of performance, energy efficiency and reliability, but each has its own particular strengths and qualities.

At the top of the range we have our LED Precise™ Lamps, offering long life, high CRI light quality and great aesthetics. Next there's our extremely popular LED Energy Smart™ range, combining the best of both worlds: impressive performance and outstanding efficiency.

And for applications requiring dependable performance and maximum affordability, choose our functional LED Start range.



LED LAMPS LAST UP TO 25X LONGER THAN INCANDESCENT LAMPS



UP TO 80-90% ENERGY SAVING



REDUCED MAINTENANCE COSTS



LED Start



Dependable operation and reliability

Affordable Start range – functional design for dependable operation and reliable performance.

- Standard performance specifications
- Dependable operation and reliability
- Functional and economical design



LED Energy Smart™



Outstanding efficiency

Mainstream Energy Smart™ range for applications requiring high performance, reliability and efficiency.

- High quality performance and reliability
- Available in General, Decorative and Spotlights
- Wide range of base, finish and beam angles
- Outstanding efficiency: 80-90% energy saving
- Reduced maintenance costs for improved ROI
- High Lumen Output and energy efficiency



LED Precise™



Very long operating life

Premium performance Precise™ range for aesthetics, energy efficiency, high lumen output and long operating life.

- Premium products with superior performance
- Energy efficiency
- Superior colour quality with CRI 90/95
- Very long operating life: up to 50,000 hrs
- Optimised dimming function and compatibility



Quick and easy upgrade for LFLs

Our extensive range of LED Tubes enables existing T8 Linear Fluorescent Lamps (LFLs) to be upgraded to high quality, energy efficient LED lighting with a simple switch.

With products available in plastic and glass design options compatible with electronic or magnetic gears, we have solutions – and easy upgrade paths – for every application.



Significant cost savings

- Energy savings of up to 60% or more
- High lumens means fewer luminaires required

Reduced maintenance

- Up to 3x longer life vs. fluorescents on electro-magnetic gear
- Excellent lumen maintenance

Reliable, high quality light

- Instant on, no flicker
- Excellent colour rendering CRI 80+
- Colour options 3000/4000/6500K

Quick and easy installation

- Plug-and-play products
- 600, 1200, 1500 and 1800mm tubes
- Fit directly into standard T8 LFL G13 sockets
- Rotatable base to adjust lamp into perfect position

Environmentally friendly solutions

- Extremely energy efficient
- Reduced carbon footprint
- No harmful lead or mercury
- Fully compliant with material restriction requirements of RoHS



Start

Energy Smart™, BrightStik™, LED Glass



ECO Snowcone
Cap: E27, B22
Wattage: 5W, 7W, 11W, 16W
Voltage: 220 – 240V
Rated life: 10 000 h



High Lumen
Cap: E27
Wattage: 21W, 27W, 42W
Voltage: 220 – 240V
Rated life: 10 000 h



Energy Smart™ Omni Dimmable
Cap: E27, B22
Wattage: 7W, 9W, 12W, 15W
Voltage: 220 – 240V
Rated life: 15 000 h



Bright Stik™ and E14
Cap: E27, B22, E14
Wattage: 6W, 7W, 9W, 12W, 15W
Voltage: 220 – 240V
Rated life: 10 000 h (E14) and 15 000 h (E27, B22)



A55
Cap: E27, B22
Wattage: 8W, 10W
Voltage: 220 – 240V
Rated life: 10 000 h



DimStik
Cap: E27, B22
Wattage: 9W, 14W
Voltage: 220 – 240V
Rated life: 15 000 h



LED Glass
Cap: E27, B22
Wattage: 4.5W, 8W, 10W, 13W
Voltage: 220 – 240V
Rated life: 10 000 h

LED GLS

Start

Energy Smart™



Start Deco Candle
Cap: E14, E27, B22
Wattage: 3.5W, 5.5W
Voltage: 220 – 240V
Finish: White
Rated life: 10 000 h



Energy Smart™ Crown Deco Dimmable
Cap: E14, E27, B22
Wattage: 6W, 4W
Voltage: 220 – 240V
Rated life: 20 000 h



Energy Smart™ Crown Deco Dimmable
Cap: E14, E27, B22, B15
Wattage: 6W, 4W
Voltage: 220 – 240V
Rated life: 20 000 h

LED Candle

Start

Energy Smart™



Start Deco Spherical
Cap: E14, E27, B22
Wattage: 3.5W, 5.5W
Voltage: 220 – 240V
Finish: White
Rated life: 10 000 h



Energy Smart™ Crown Deco Dimmable
Cap: E14, E27
Wattage: 6W, 4W
Voltage: 220 – 240V
Rated life: 20 000 h



Energy Smart™ Crown Deco Dimmable
Cap: E14, E27, B22
Wattage: 6W, 4W
Voltage: 220 – 240V
Rated life: 20 000 h

LED Spherical and Globe

LED Filament

Dimmable



Candle Clear
Cap: E14, B22
Wattage: 3.5W
Voltage: 220 – 240V
Rated life: 15 000 h



Candle Gold
Cap: E14, B22
Wattage: 3.5W
Voltage: 220 – 240V
Rated life: 15 000 h



Pear Clear
Cap: E27, B22
Wattage: 5.5W
Voltage: 220 – 240V
Rated life: 15 000 h



Pear Gold
Cap: E27, B22
Wattage: 5.5W
Voltage: 220 – 240V
Rated life: 15 000 h



Globe 80
Cap: E27, B22
Wattage: 5.5W
Voltage: 220 – 240V
Rated life: 15 000 h



Globe 95
Cap: E27, B22
Wattage: 5.5W
Voltage: 220 – 240V
Rated life: 15 000 h



GLS 160
Cap: E27, B22
Wattage: 6W
Voltage: 220 – 240V
Rated life: 15 000 h



Globe 200
Cap: E27, B22
Wattage: 6W
Voltage: 220 – 240V
Rated life: 15 000 h

LED Filament Heliax

Non-Dimmable



Filament GLS
Cap: E27
Wattage: 4W, 5W, 6.5W
Voltage: 220 – 240V
Rated life: 10 000 h



Filament Globe
Cap: E27
Wattage: 4W, 5W, 6.5W
Voltage: 220 – 240V
Rated life: 10 000 h



Filament Spherical
Cap: E27, B22, E14
Wattage: 2.5 – 4W
Voltage: 220 – 240V
Rated life: 10 000 h



Filament Candle
Cap: E27, B22, E14
Wattage: 2.5 – 4W
Voltage: 220 – 240V
Rated life: 10 000 h

LED Filament

Energy Smart™



Energy Smart™ Pygmy
Cap: E14
Wattage: 1.6W
Voltage: 100 – 240V
Rated life: 15 000 h



Energy Smart™ Capsule G4
Cap: G4
Wattage: 1.6W
Voltage: 12V
Rated life: 15 000 h



Energy Smart™ Capsule G9
Cap: G9
Wattage: 2.5W
Voltage: 100 – 240V
Rated life: 15 000 h

LED Pygmy, Capsules

Model	Wattage (W)	Watt Replacement	Cap	Product Description	GE Product Code	Tungram Product Code	Lumen (lm)	CCT (K)	Beam Angle (°)	CRI (Ra)	Rated life L70/B50 (h)	EEC	Diameter (mm)	Length (mm)	Pack Qty
-------	-------------	------------------	-----	---------------------	-----------------	----------------------	------------	---------	----------------	----------	------------------------	-----	---------------	-------------	----------

Bright Stik™

Single pack

2	6	40	B22	LED 6/STIK/830/220-240V/B22/BX	93064017	93095930 *	470	3000	240	80	15k	A+	38	113.5	15
1	6	40	E27	LED 6/STIK/830/220-240V/E27/BX	93064014	93064050 *	470	3000	240	80	15k	A+	38	115.5	15
1	6	42	E27	LED 6/STIK/840/220-240V/E27/BX	93064015	-	500	4000	240	80	15k	A+	38	115.5	15
2	6	42	B22	LED 6/STIK/865/220-240V/B22/BX	93064018	93095931 *	500	6500	240	80	15k	A+	38	113.5	15
1	6	44	E27	LED 6/STIK/865/220-240V/E27/BX	93064016	93064051 *	500	6500	240	80	15k	A+	38	115.5	15
2	9	60	B22	LED 9/STIK/830/220-240V/B22/BX	93064022	93095932 *	810	3000	240	80	15k	A+	38	113.5	15
1	9	60	E27	LED 9/STIK/830/220-240V/E27/BX	93064019	93064052 *	810	3000	240	80	15k	A+	38	115.5	15
1	9	63	E27	LED 9/STIK/840/220-240V/E27/BX	93064020	-	850	4000	240	80	15k	A+	38	115.5	15
2	9	63	B22	LED 9/STIK/865/220-240V/B22/BX	93064023	93095933 *	850	6500	240	80	15k	A+	38	113.5	15
1	9	63	E27	LED 9/STIK/865/220-240V/E27/BX	93064021	93064053 *	850	6500	240	80	15k	A+	38	115.5	15
2	12	75	B22	LED12/STIK/830/220-240V/B22/BX	93064027	93095934 *	1055	3000	240	80	15k	A+	45	135.5	15
1	12	75	E27	LED12/STIK/830/220-240V/E27/BX	93064024	93064054 *	1055	3000	240	80	15k	A+	45	137.5	15
1	12	80	E27	LED12/STIK/840/220-240V/E27/BX	93064025	-	1150	4000	240	80	15k	A+	45	137.5	15
2	12	80	B22	LED12/STIK/865/220-240V/B22/BX	93064028	93095935 *	1150	6500	240	80	15k	A+	45	135.5	15
1	12	80	E27	LED12/STIK/865/220-240V/E27/BX	93064026	93064055 *	1150	6500	240	80	15k	A+	45	137.5	15
2	15	100	B22	LED15/STIK/830/220-240V/B22/BX	93064032	93095930 *	1521	3000	240	80	15k	A+	45	135.5	15
1	15	100	E27	LED15/STIK/830/220-240V/E27/BX	93064029	93064056 *	1521	3000	240	80	15k	A+	45	137.5	15
1	15	104	E27	LED15/STIK/840/220-240V/E27/BX	93064030	-	1600	4000	240	80	15k	A+	45	137.5	15
2	15	104	B22	LED15/STIK/865/220-240V/B22/BX	93064033	93096457 *	1600	6500	240	80	15k	A+	45	135.5	15
1	15	104	E27	LED15/STIK/865/220-240V/E27/BX	93064031	93064057 *	1600	6500	240	80	15k	A+	45	137.5	15

Multi pack

1	6	40	E27	LED 6/STIK/830/220-240V/E27/F 3/15	93079654	-	470	3000	240	80	15k	A+	38	115.5	15
2	6	42	E27	LED 6/STIK/840/220-240V/E27/F 3/15	93079655	-	500	4000	240	80	15k	A+	38	115.5	15
1	6	44	E27	LED 6/STIK/865/220-240V/E27/F 3/15	93080246	-	500	6500	240	80	15k	A+	38	115.5	15
2	9	60	B22	LED 9/STIK/830/220-240/B22/F 3/15	93068473	-	810	3000	240	80	15k	A+	38	113.5	15
2	9	60	E27	LED 9/STIK/830/220-240/E27/F 3/15	93068471	-	810	3000	240	80	15k	A+	38	115.5	15
1	9	63	E27	LED 9/STIK/840/220-240/E27/F 3/15	93068472	-	850	4000	240	80	15k	A+	38	115.5	15
1	9	60	E27	LED 9/STIK/865/220-240V/E27/F 3/15	93080247	-	850	6500	240	80	15k	A+	38	115.5	15
1	12	75	E27	LED12/STIK/830/220-240V/E27/F 2/10	93080248	-	1055	3000	240	80	15k	A+	45	137.5	10
2	12	80	E27	LED12/STIK/840/220-240V/E27/F 2/10	93080249	-	1150	4000	240	80	15k	A+	45	137.5	10
1	12	80	E27	LED12/STIK/865/220-240V/E27/F 2/10	93080250	-	1150	6500	240	80	15k	A+	45	137.5	10
1	15	100	E27	LED15/STIK/830/220-240V/E27/F 2/10	93080251	-	1521	3000	240	80	15k	A+	45	137.5	10
1	15	104	E27	LED15/STIK/840/220-240V/E27/F 2/10	93080252	-	1600	4000	240	80	15k	A+	45	137.5	10
2	15	104	E27	LED15/STIK/865/220-240V/E27/F 2/10	93080253	-	1600	6500	240	80	15k	A+	45	137.5	10

Bright Stik™ - E14

Single pack

3	7	45	E14	LED 7/STIK/830/100-240/E14/F 1/15	93047729	93047284	550	3000	240	80	10k	A+	32	103	15
3	7	48	E14	LED 7/STIK/840/100-240/E14/F 1/15	93047727	-	600	4000	240	80	10k	A+	32	103	15
3	7	48	E14	LED 7/STIK/865/100-240/E14/F 1/15	93047728	93047283	600	6500	240	80	10k	A+	32	103	15

Multi pack

3	7	45	E14	LED 7/STIK/830/100-240/E14/F 3/15	93047281	-	550	3000	240	80	10k	A+	32	103	15
3	7	48	E14	LED 7/STIK/840/100-240/E14/F 3/15	93047524	-	600	4000	240	80	10k	A+	32	103	15
3	7	48	E14	LED 7/STIK/865/100-240/E14/F 3/15	93048805	-	600	6500	240	80	10k	A+	32	103	15

* will be available on Q3

Product Description - explanation

For further information check the glossary

LED 7	A60	8	65	100-240V	E27	F
Identifies Lamp wattage	Identifies the lamp type	CRI	CCT	Voltage	Identifies the cap type	Identifies the finish of the lamp F=FR=Frosted C=CLS=Clear



1

2

3

Wattage (W)	Watt Replacement	Cap	Product Description	GE Product Code	Tungram Product Code	Lumen (lm)	CCT (K)	Beam Angle (°)	CRI (Ra)	Rated life L70/B50 (h)	EEC	Diameter (mm)	Length (mm)	Pack Qty	Model
-------------	------------------	-----	---------------------	-----------------	----------------------	------------	---------	----------------	----------	------------------------	-----	---------------	-------------	----------	-------

LED DimStik - Dimmable Bright Stik

9	60	B22	LED DimSTIK 9(60) 830 B22 TU	-	93104350	806	3000	240	80	15k	A+	38	114	15	2
9	60	E27	LED DimSTIK 9(60) 830 E27 TU	-	93104352	806	3000	240	80	15k	A+	38	116	15	1
9	60	B22	LED DimSTIK 9(60)840 B22 TU	-	93104354	806	4000	240	80	15k	A+	38	114	15	2
9	60	E27	LED DimSTIK 9(60)840 E27 TU	-	93104356	806	4000	240	80	15k	A+	38	116	15	1
9	60	B22	LED DimSTIK 9(60)865 B22 TU	-	93104358	806	6500	240	80	15k	A+	38	114	15	2
9	60	E27	LED DimSTIK 9(60)865 E27 TU	-	93104360	806	6500	240	80	15k	A+	38	116	15	1
14	100	B22	LED DimSTIK 14(100)830 B22 TU	-	93104208	1521	3000	240	80	15k	A+	45	136	15	2
14	100	E27	LED DimSTIK 14(100)830 E27 TU	-	93104210	1521	3000	240	80	15k	A+	45	138	15	1
14	100	B22	LED DimSTIK 14(100)840 B22 TU	-	93104212	1521	4000	240	80	15k	A+	45	136	15	2
14	100	E27	LED DimSTIK 14(100)840 E27 TU	-	93104214	1521	4000	240	80	15k	A+	45	138	15	1
14	100	B22	LED DimSTIK 14(100)865 B22 TU	-	93104346	1521	6500	240	80	15k	A+	45	136	15	2
14	100	E27	LED DimSTIK 14(100)865 E27 TU	-	93104348	1521	6500	240	80	15k	A+	45	138	15	1

Start - ECO Snowcone

5	33	B22	LED 5/A60/830/220-240V/B22/BX ECO	93057915 **	-	350	3000	160	80	10k	A+	60	109	6	5
5	33	E27	LED 5/A60/830/220-240V/E27/BX ECO	93043186 **	-	350	3000	160	80	10k	A+	60	109	6	4
5	36	B22	LED 5/A60/865/220-240V/B22/BX ECO	93058236 **	-	400	6500	160	80	10k	A+	60	109	6	5
5	36	E27	LED 5/A60/865/220-240V/E27/BX ECO	93043191 **	-	400	6500	160	80	10k	A+	60	109	6	4
7	40	B22	LED 7/A60/827/220-240V/B22/BX ECO	93063991	-	470	2700	160	80	10k	A+	60	107	6	7
7	40	E27	LED 7/A60/827/220-240V/E27/BX ECO	93063990	93069747	470	2700	160	80	10k	A+	60	109	6	6
7	40	B22	LED 7/A60/865/220-240V/B22/BX ECO	93069732	-	500	6500	160	80	10k	A+	60	107	6	9
7	40	E27	LED 7/A60/865/220-240V/E27/BX ECO	93069731	93069750	500	6500	160	80	10k	A+	60	109	6	6
10	60	B22	LED10/A60/827/220-240V/B22/BX ECO	93063993	-	810	2700	160	80	10k	A+	60	107	6	7
10	60	E27	LED10/A60/827/220-240V/E27/BX ECO	93063992	93069748	810	2700	160	80	10k	A+	60	109	6	6
10	60	B22	LED10/A60/865/220-240V/B22/BX ECO	93069734	-	850	6500	160	80	10k	A+	60	107	6	9
10	60	E27	LED10/A60/865/220-240V/E27/BX ECO	93069733	93069751	850	6500	160	80	10k	A+	60	109	6	6
11	75	B22	LED11/A60/827/220-240V/B22/BX ECO	93063995	-	1055	2700	160	80	10k	A+	60	107	6	7
11	75	E27	LED11/A60/827/220-240V/E27/BX ECO	93063994	93064008	1055	2700	160	80	10k	A+	60	109	6	6
11	80	B22	LED11/A60/865/220-240V/B22/BX ECO	93063999	-	1150	6500	160	80	10k	A+	60	107	6	7
11	80	E27	LED11/A60/865/220-240V/E27/BX ECO	93063998	93064009	1150	6500	160	80	10k	A+	60	109	6	6
16	100	B22	LED16/A67/827/220-240V/B22/BX ECO	93064001	-	1521	2700	160	80	10k	A+	67	139	6	11
16	100	E27	LED16/A67/827/220-240V/E27/BX ECO	93064000	93064010	1521	2700	160	80	10k	A+	67	141	6	8
16	100	B22	LED16/A67/865/220-240V/B22/BX ECO	93069746	-	1600	6500	160	80	10k	A+	67	139	6	11
16	100	E27	LED16/A67/865/220-240V/E27/BX ECO	93069735	93069752	1600	6500	160	80	10k	A+	67	141	6	8

LED A55

8	55	B22	LED ECO A55 8W(55) 830 B22 TU	-	93093866	720	3000	180	80	10k	A+	57	101
---	----	-----	-------------------------------	---	----------	-----	------	-----	----	-----	----	----	-----

LED Retrofit Solutions / LED Lamps

Model	Wattage (W)	Watt Replacement	Cap	Product Description	GE Product Code	Tungram Product Code	Lumen (lm)	CCT (K)	Beam Angle (°)	CRI (Ra)	Rated life L70/B50 (h)	EEC	Diameter (mm)	Length (mm)	Pack Qty
LED HighLumen															
1	21	120	E27	LED HighLumen T80 21W(120) 830 E27 TU	-	93083678	1900	3000	200	80	10k	A+	81	149	6
1	21	125	E27	LED HighLumen T80 21W(125) 865 E27 TU	-	93083679	2000	6500	200	80	10k	A+	81	149	6
2	27	169	E27	LED HighLumen T100 27W(169) 830 E27 TU	-	93083680	2800	3000	200	80	10k	A+	101	189	4
2	27	179	E27	LED HighLumen T100 27W(179) 865 E27 TU	-	93083681	3000	6500	200	80	10k	A+	101	189	4
3	42	217	E27	LED HighLumen T120 42W(217) 830 E27 TU	-	93083682	3700	3000	200	80	10k	A+	119	219	4
3	42	233	E27	LED HighLumen T120 42W(233) 865 E27 TU	-	93083683	4000	6500	200	80	10k	A+	119	219	4
Energy Smart™ - GLS OMNI - Dimmable															
5	7	40	B22	LED ESmart A60 7W(40)Dim 827 B22	93064060	93096484 *	470	2700	240	80	15k	A+	58	108	6
4	7	40	E27	LED ESmart A60 7W(40)Dim 827 E27	93064061	93096485 *	470	2700	240	80	15k	A+	58	109	6
5	9	60	B22	LED ESmart A60 9W(60)Dim 827 B22	93064062	93096486 *	810	2700	240	80	15k	A+	58	108	6
4	9	60	E27	LED ESmart A60 9W(60)Dim 827 E27	93064063	93096487 *	810	2700	240	80	15k	A+	58	109	6
7	12	75	B22	LED ESmart A67 12W(75)Dim 827 B22	93064064	93096488 *	1055	2700	240	80	15k	A+	70	133	6
6	12	75	E27	LED ESmart A67 12W(75)Dim 827 E27	93064065	93096489 *	1055	2700	240	80	15k	A+	70	134	6
7	15	100	B22	LED ESmart A67 15W(100)Dim 827 B22	93064066	93096490 *	1521	2700	240	80	15k	A+	70	133	6
6	15	100	E27	LED ESmart A67 15W(100)Dim 827 E27	93064067	93096491 *	1521	2700	240	80	15k	A+	70	134	6
LED Glass															
9	4.5	40	B22	LED Glass A60 4.5W(40) 827 B22	93074737	93096470 *	470	2700	360	80	10k	A++	60	106	6
8	4.5	40	E27	LED Glass A60 4.5W(40) 827 E27	93074732	93056633 *	470	2700	360	80	10k	A++	60	106	6
9	4.5	40	B22	LED Glass A60 4.5W(40) 840 B22	93074738	93096471 *	500	4000	360	80	10k	A++	60	106	6
8	4.5	40	E27	LED Glass A60 4.5W(40) 840 E27	93074733	93096472 *	500	4000	360	80	10k	A++	60	106	6
9	4.5	40	B22	LED Glass A60 4.5W(40) 865 B22	93074739	93096473 *	500	6500	360	80	10k	A++	60	106	6
8	4.5	40	E27	LED Glass A60 4.5W(40) 865 E27	93074734	93096474 *	500	6500	360	80	10k	A++	60	106	6
9	8	60	B22	LED Glass A60 8W(60) 827 B22	93074740	93096475 *	810	2700	360	80	10k	A+	60	106	6
8	8	60	E27	LED Glass A60 8W(60) 827 E27	93074735	93056632 *	810	2700	360	80	10k	A+	60	106	6
9	8	60	B22	LED Glass A60 8W(60) 840 B22	93074741	93096476 *	850	4000	360	80	10k	A+	60	106	6
8	8	60	E27	LED GLASS A60 8W(60) 840 E27	93059798	93096477 *	850	4000	360	80	10k	A+	60	106	6
9	8	60	B22	LED Glass A60 8W(60) 865 B22	93074742	93096478 *	850	6500	360	80	10k	A+	60	106	6
8	8	60	E27	LED Glass A60 8W(60) 865 E27	93074736	93096479 *	850	6500	360	80	10k	A+	60	106	6
10	10	75	E27	LED GLASS A67 10W(75) 827 E27 HBX	93081799	93090780 *	1055	2700	360	80	10k	A+	67	135	6
10	10	75	E27	LED GLASS A67 10W(75) 840 E27 HBX	93081800	93096480 *	1150	4000	360	80	10k	A+	67	135	6
10	10	75	E27	LED GLASS A67 10W(75) 865 E27 HBX	93081801	93096481 *	1150	6500	360	80	10k	A+	67	135	6
10	13	100	E27	LED GLASS A67 13W(100) 827 E27 HBX	93081802	93090781 *	1521	2700	360	80	10k	A+	67	135	6
10	13	100	E27	LED GLASS A67 13W(100) 840 E27 HBX	93081803	93096482 *	1600	4000	360	80	10k	A+	67	135	6
10	13	100	E27	LED GLASS A67 13W(100) 865 E27 HBX	93081804	93096483 *	1600	6500	360	80	10k	A+	67	135	6

* will be available on Q3



LED Retrofit Solutions / LED Lamps

Wattage (W)	Watt Replacement	Cap	Product Description	GE Product Code	Tungram Product Code	Lumen (lm)	CCT (K)	Beam Angle (°)	CRI (Ra)	Rated life L70/B50 (h)	EEC	Diameter (mm)	Length (mm)	Pack Qty	Model
LED Filament - GLS A60 - Clear and Pearl															
4	40	E27	LED4/A60 FIL/827/220-240V/E27 H	93021980	-	420	2700	355	80	10k	A++	60	115	6	11
5	50	E27	LED5/A60 FIL/827/220-240V/E27 Clear	93046417	-	590	2700	355	80	10k	A++	60	115	6	11
6.5	57	E27	LED6.5/A60 FIL/827/220-240V/E27 Clear	93046421	-	760	2700	355	80	10k	A++	60	115	6	11
4	40	E27	LED4/A60 FIL/827/220-240V/E27 Pearl	93046416	-	460	2700	355	80	10k	A++	60	115	6	12
5	50	E27	LED5/A60 FIL/827/220-240V/E27 Pearl	93046420	-	590	2700	355	80	10k	A++	60	115	6	12
6.5	57	E27	LED6.5/A60 FIL/827/220-240V/E27 Pearl	93046419	-	760	2700	355	80	10k	A++	60	115	6	12
LED Filament - Globe G80 - Clear and Pearl															
4	40	E27	LED4/G80 FIL/827/220-240V/E27 Clear	93053090	-	460	2700	355	80	10k	A++	80	128	6	13
5	50	E27	LED5/G80 FIL/827/220-240V/E27 Clear	93053088	-	590	2700	355	80	10k	A++	80	128	6	13
6.5	57	E27	LED6.5/G80 FIL/827/220-240V/E27 Clear	93052991	93063485	760	2700	355	80	10k	A++	80	128	6	13
4	40	E27	LED4/G80 FIL/827/220-240V/E27 Pearl	93053089	-	460	2700	355	80	10k	A++	80	128	6	14
5	50	E27	LED5/G80 FIL/827/220-240V/E27 Pearl	93052992	-	590	2700	355	80	10k	A++	80	128	6	14
6.5	57	E27	LED6.5/G80 FIL/827/220-240V/E27 Pearl	93053091	-	760	2700	355	80	10k	A++	80	128	6	14
LED Filament - Candle															
2.5	25	B22	LED2.5/B35FIL/827/B22/220-240V/ 1/10	93051682	-	250	2700	355	80	10k	A++	35	90	10	15
2.5	25	E14	LED2.5/B35FIL/827/E14/220-240V/ 1/10	93051683	-	250	2700	355	80	10k	A++	35	98	10	15
2.5	25	E27	LED2.5/B35FIL/827/E27/220-240V/ 1/10	93051684	-	250	2700	355	80	10k	A++	35	90	10	15
4	40	B22	LED4/B35FIL/827/B22/220-240V/ 1/10	93051679	-	470	2700	355	80	10k	A++	35	90	10	15
4	40	E14	LED4/B35FIL/827/E14/220-240V/ 1/10	93051680	93091957	470	2700	355	80	10k	A++	35	98	10	15
4	40	E27	LED4/B35FIL/827/E27/220-240V/ 1/10	93051681	-	470	2700	355	80	10k	A++	35	90	10	15
LED Filament - Spherical															
2.5	25	B22	LED2.5/P45FIL/827/B22/220-240V/ 1/6	93051673	-	250	2700	355	80	10k	A++	45	73	6	16
2.5	25	E14	LED2.5/P45FIL/827/E14/220-240V/ 1/6	93051677	-	250	2700	355	80	10k	A++	45	78	6	16
2.5	25	E27	LED2.5/P45FIL/827/E27/220-240V/ 1/6	93051678	-	250	2700	355	80	10k	A++	45	73	6	16
4	40	B22	LED4/P45FIL/827/B22/220-240V/ 1/6	93051674	-	470	2700	355	80	10k	A++	45	73	6	16
4	40	E14	LED4/P45FIL/827/E14/220-240V/ 1/6	93051675	93091958	470	2700	355	80	10k	A++	45	78	6	16
4	40	E27	LED4/P45FIL/827/E27/220-240V/ 1/6	93051676	-	470	2700	355	80	10k	A++	45	73	6	16



Model	Wattage (W)	Watt Replacement	Cap	Product Description	GE Product Code	Tungstrom Product Code	Lumen (lm)	CCT (K)	Beam Angle (°)	CRI (Ra)	Rated life L70/B50 (h)	EEC	Diameter (mm)	Length (mm)	Pack Qty
LED Filament Helix - Dimmable															
1	3.5	36	B22	LED Fil Helix Candle 3.5W Dim 820 B22	93078666	93096492 *	125	2000	310	80	15k	A	35	97	10
1	3.5	36	E14	LED Fil Helix Candle 3.5W Dim 820 E14	93078636	93096493 *	125	2000	310	80	15k	A	35	97	10
1	3.5	36	B22	LED Fil Helix Candle 3.5W Dim 822 B22	93078667	93096494 *	125	2200	310	80	15k	A	35	97	10
1	3.5	36	E14	LED Fil Helix Candle 3.5W Dim 822 E14	93078637	93096495 *	125	2200	310	80	15k	A	35	97	10
2	5.5	45	B22	LED Fil Helix Pear 5.5W Dim 820 B22	93078648	93096496 *	250	2000	310	80	15k	A	64	138	6
2	5.5	45	E27	LED Fil Helix Pear 5.5W Dim 820 E27	93078646	93096497 *	250	2000	310	80	15k	A	64	140	6
2	5.5	45	B22	LED Fil Helix Pear 5.5W Dim 822 B22	93078649	93096498 *	250	2200	310	80	15k	A	64	138	6
2	5.5	45	E27	LED Fil Helix Pear 5.5W Dim 822 E27	93078647	93096499 *	250	2200	310	80	15k	A	64	140	6
3	5.5	45	B22	LED Fil Helix Globe80 5.5W Dim 820 B22	93078642	93096500 *	250	2000	310	80	15k	A	80	120	4
3	5.5	45	E27	LED Fil Helix Globe80 5.5W Dim 820 E27	93078643	93096501 *	250	2000	310	80	15k	A	80	122	4
3	5.5	45	B22	LED Fil Helix Globe95 5.5W Dim 820 B22	93078644	93096502 *	250	2000	310	80	15k	A	95	138	4
3	5.5	45	E27	LED Fil Helix Globe95 5.5W Dim 820 E27	93078645	93096503 *	250	2000	310	80	15k	A	95	140	4
4	6	50	B22	LED Fil Helix Globe200 6W Dim 820 B22	93078638	93096504 *	300	2000	310	80	15k	A	200	281	1
4	6	50	E27	LED Fil Helix Globe200 6W Dim 820 E27	93078639	93096505 *	300	2000	310	80	15k	A	200	283	1
5	6	50	B22	LED Fil Helix GLS160 6W Dim 820 B22	93078640	93096506 *	300	2000	310	80	15k	A	160	288	1
5	6	50	E27	LED Fil Helix GLS160 6W Dim 820 E27	93078641	93096507 *	300	2000	310	80	15k	A	160	290	1
Start - DECO Candle															
8	3.5	25	B22	LED3.5/B35/827/B22/220-240V/FR	93063345	93096466 *	250	2700	-	80	10k	A+	35	106	10
6	3.5	25	E14	LED3.5/B35/827/E14/220-240V/FR	93063342	93063980 *	250	2700	-	80	10k	A+	35	107	10
7	3.5	25	E27	LED3.5/B35/827/E27/220-240V/FR	93063344	93063982 *	250	2700	-	80	10k	A+	35	107	10
6	3.5	25	E14	LED3.5/B35/865/E14/220-240V/FR	93063343	93063981 *	250	6500	-	80	10k	A+	35	107	10
8	5.5	40	B22	LED5.5/B35/827/B22/220-240V/FR	93063963	93096467 *	470	2700	-	80	10k	A+	35	106	10
6	5.5	40	E14	LED5.5/B35/827/E14/220-240V/FR	93063960	93063985 *	470	2700	-	80	10k	A+	35	107	10
7	5.5	40	E27	LED5.5/B35/827/E27/220-240V/FR	93063962	93063987 *	470	2700	-	80	10k	A+	35	107	10
6	5.5	42	E14	LED5.5/B35/865/E14/220-240V/FR	93063961	93063986 *	500	6500	-	80	10k	A+	35	107	10

* will be available on Q3



Wattage (W)	Watt Replacement	Cap	Product Description	GE Product Code	Tungstrom Product Code	Lumen (lm)	CCT (K)	Beam Angle (°)	CRI (Ra)	Rated life L70/B50 (h)	EEC	Diameter (mm)	Length (mm)	Pack Qty	Model
Energy Smart™ - CROWN DECO Candle - Frosted - Dimmable															
4	25	E14	LED4D/B35/827/E14/220-240V/FR 1/10	93030093	-	270	2700	240	80	20k	A+	36	94	10	9
4	25	E27	LED4D/B35/827/E27/220-240V/FR 1/10	93030094	-	270	2700	240	80	20k	A+	36	94	10	10
6	40	E14	LED6D/B38/827/E14/220-240V/FR 1/10	93030252	-	470	2700	240	80	20k	A+	38	112	10	9
6	40	E27	LED6D/B38/827/E27/220-240V/FR 1/10	93030254	-	470	2700	240	80	20k	A+	38	112	10	10
6	40	B22	LED6D/B38/827/B22/220-240V/FR 1/10	93030120	-	470	2700	240	80	20k	A+	38	112	10	11
Energy Smart™ - CROWN DECO Candle - Clear Dimmable															
4	25	B15	LED4D/B35/827/B15/220-240V/CLS 1/10	93029957	-	270	2700	160	80	20k	A+	36	94	10	15
4	25	B22	LED4D/B35/827/B22/220-240V/CLS 1/10	93030091	-	270	2700	160	80	20k	A+	36	94	10	14
4	25	E14	LED4D/B35/827/E14/220-240V/CLS 1/10	93030092	-	270	2700	160	80	20k	A+	36	94	10	12
4	25	E27	LED4D/B35/827/E27/220-240V/CLS 1/10	93029539	-	270	2700	160	80	20k	A+	36	94	10	13
6	40	B22	LED6D/B38/827/B22/220-240V/CLS 1/10	93030119	-	470	2700	160	80	20k	A+	38	112	10	14
6	40	E14	LED6D/B38/827/E14/220-240V/CLS 1/10	93030251	-	470	2700	160	80	20k	A+	38	112	10	12
6	40	E27	LED6D/B38/827/E27/220-240V/CLS 1/10	93030253	-	470	2700	160	80	20k	A+	38	112	10	13
Start - DECO Spherical															
3.5	25	B22	LED3.5/P45/827/B22/220-240V/FR	93063959	93096468 *	250	2700	-	80	10k	A+	45	82	6	17
3.5	25	E14	LED3.5/P45/827/E14/220-240V/FR	93063956	93063983 *	250	2700	-	80	10k	A+	45	87	6	18
3.5	25	E27	LED3.5/P45/827/E27/220-240V/FR	93063958	93077312 *	250	2700	-	80	10k	A+	45	84	6	16
3.5	25	E14	LED3.5/P45/865/E14/220-240V/FR	93063957	93063984 *	250	6500	-	80	10k	A+	45	87	6	18
5.5	40	B22	LED5.5/P45/827/B22/220-240V/FR	93063967	93096469 *	470	2700	-	80	10k	A+	45	82	6	17
5.5	40	E14	LED5.5/P45/827/E14/220-240V/FR	93063964	93063988 *	470	2700	-	80	10k	A+	45	87	6	18
5.5	40	E27	LED5.5/P45/827/E27/220-240V/FR	93063966	93077311 *	470	2700	-	80	10k	A+	45	84	6	17
5.5	42	E14	LED5.5/P45/865/E14/220-240V/FR	93063965	93063989 *	500	6500	-	80	10k	A+	45	87	6	18
Energy Smart™ - CROWN DECO Spherical - Frosted - Dimmable															
4	25	B22	LED4D/P45/827/B22/220-240V/FR 1/6	93030255	-	270	2700	240	80	20k	A+	42	76	6	20
4	25	E14	LED4D/P45/827/E14/220-240V/FR 1/6	93030257	-	270	2700	240	80	20k	A+	42	76	6	21
4	25	E27	LED4D/P45/827/E27/220-240V/FR 1/6	93030259	-	270	2700	240	80	20k	A+	42	76	6	19
6	40	E14	LED6D/P45/827/E14/220-240V/FR 1/6	93030264	-	470	2700	240	80	20k	A+	45	90	6	21
6	40	E27	LED6D/P45/827/E27/220-240V/FR 1/6	93030266	-	470	2700	240	80	20k	A+	45	90	6	19
Energy Smart™ - CROWN DECO Spherical - Clear- Dimmable															
4	25	E14	LED4D/P45/827/E14/220-240V/CLS 1/6	93030256	-	270	2700	160	80	20k	A+	42	76	6	21
4	25	E27	LED4D/P45/827/E27/220-240V/CLS 1/6	93030258	-	270	2700	160	80	20k	A+	42	76	6	19
6	40	E14	LED6D/P45/827/E14/220-240V/CLS 1/6	93030263	-	470	2700	160	80	20k	A+	45	90	6	21
6	40	E27	LED6D/P45/827/E27/220-240V/CLS 1/6	93030265	-	470	2700	160	80	20k	A+	45	90	6	19
EnergySmart™ - Capsules															
1.6	15	G4	LED1.6/G4/827/12V/BL 1/10	93019426	93032238	150	2700	240	80	15k	A+	14	38	10	22
2.5	20	G9	LED2.5/G9/827/220-240V/BL 1/10	93019427	93032239	200	2700	240	80	15k	A+	18	52	10	22
EnergySmart™ - Pygmy															
1.6	15	E14	LED1.6/T25/827/100-240V/E14/F TWBL 2/10	93022938	93032237	140	2700	-	80	15k	A++	25	59	10	23
1.6	15	E14	LED1.6/T25/865/100-240V/E14/F BL 1/10	93046028	93042892	150	6500	-	80	15k	A++	25	59	10	23

* will be available on Q3



Start

Energy Smart™

Precise™



Energy Smart™ R111

Cap: G53
Wattage: 12W
Voltage: 12V
Beam Spread: 35°
Rated life: 30 000 h



Precise™ R111 Dimmable

Cap: G53
Wattage: 15W
Voltage: 12V
Beam Spread: 25/40°
Rated life: 25 000 h

LED Specialty PAR56 - Pool Lamp



Specialty PAR56

Cap: Screw Terminal
Wattage: 16W
Voltage: 12V
Beam Spread: 90°
Rated life: 25 000 h

LED Specialty PAR56

LED R111

Start

Energy Smart™

Precise™



Start R50

Cap: E14
Wattage: 6W
Voltage: 220 – 240V
Beam Spread: 120°
Rated life: 15 000 h



Energy Smart™ PAR38

Cap: E27
Wattage: 15W
Voltage: 90 – 240V
Beam Spread: 40°
Rated life: 25 000 h



Precise™ PAR30 Dimmable

Cap: E27
Wattage: 11W
Voltage: 220 – 240V
Beam Spread: 35°
Rated life: 25 000 h



Start R63

Cap: E27
Wattage: 8W
Voltage: 220 – 240V
Beam Spread: 120°
Rated life: 15 000 h



Start R80

Cap: E27
Wattage: 10W
Voltage: 220 – 240V
Beam Spread: 120°
Rated life: 15 000 h

LED PAR



LED Retrofit Solutions / LED Lamps

Model	Wattage (W)	Watt Replacement	Cap	Product Description	GE Product Code	Tungram Product Code	Lumen (lm)	CCT (K)	Beam Angle (°)	CRI (Ra)	Rated life L70/B50 (h)	EEC	Energy Consumption (kWh)	Volts (V)	Diameter (mm)	Length (mm)	Pack Qty
Energy Smart™ - R111																	
1	12	75	G53	LED12/R111/830/12V/G53/35 BX 1/10	11543	-	730 3000	35	80	30k	A	12	12	111	59	10	
Precise™ - R111 Dimmable *																	
2	15	90	G53	LED Precise R111 15W(90)Dim 927 25°	93091694	93094513	850 2700	25	90	25k	A	15	12	111	56	10	
2	15	85	G53	LED Precise R111 15W(85)Dim 927 40°	93074775	93094514	800 2700	40	90	25k	A	15	12	111	56	10	
2	15	90	G53	LED Precise R111 15W(90)Dim 930 25°	93091695	93094515	850 3000	25	90	25k	A	15	12	111	56	10	
2	15	85	G53	LED Precise R111 15W(85)Dim 930 40°	93074856	93094516	800 3000	40	90	25k	A	15	12	111	56	10	
2	15	100	G53	LED Precise R111 15W(100)Dim 940 25°	93092066	93094517	900 4000	25	90	25k	A	15	12	111	56	10	
2	15	85	G53	LED Precise R111 15W(85)Dim 940 40°	93074857	93094518	800 4000	40	90	25k	A	15	12	111	56	10	
Energy Smart™ - PAR38																	
3	15	140	E27	LED15/PAR38G/830/90-240/E27/WFL BX 1/6	93044739	93104931	1200 3000	40	81	25k	A+	15	90-240	122	131	6	
LED Specialty PAR56 - Pool Lamp																	
4	16	300	Screw Terminal	LED Specialty PAR56 16W(300) 765 90° BX	93061072	93077313	1500 6500	90	70	25k	A+	16	12	177	110	1	
Precise™ - PAR30 - Dimmable																	
5	11	75	E27	LED Precise PAR30 11W (75) Dim 930 35 E27	93061073	93104932	700 3000	35	90	25k	A	11	220-240	96	91	6	
5	11	75	E27	LED Precise PAR30 11W (75) Dim 940 35 E27	93065822	93104933	800 4000	35	90	25k	A	11	220-240	96	91	6	
Start R50 & R63 & R80																	
6	3	35	E14	LED3/R50/827/E14/100-240V/35/BX1/8	84609 **	93077118 **	230 2700	35	80	12k	A++	3	220-240	50	76	8	
7	6	42	E14	LED6/R50/830/220-240V/120/E14 BX 1/6	93083025	93083837	500 3000	120	80	15k	A+	6	220-240	50	86	6	
7	6	45	E14	LED6/R50/865/220-240V/120/E14 BX 1/6	93083836	93083838	550 6500	120	80	15k	A+	6	220-240	50	86	6	
8	8	48	E27	LED8/R63/830/220-240V/120/E27 BX 1/6	93061079	93074299	600 3000	120	80	15k	A+	8	220-240	63	100	6	
8	8	54	E27	LED8/R63/865/220-240V/120/E27 BX 1/6	93074297	93074300	700 6500	120	80	15k	A+	8	220-240	63	100	6	
9	10	60	E27	LED10/R80/830/220-240V/120/E27 BX 1/6	93061080	93074301	800 3000	120	80	15k	A+	10	220-240	80	110	6	
9	10	66	E27	LED10/R80/865/220-240V/120/E27 BX 1/6	93074298	93074302	900 6500	120	80	15k	A+	10	220-240	80	110	6	

* available from Q2 2019

** will be phased out



Start

Energy Smart™

Precise™



Start GU10
 Cap: GU10
 Wattage: 3.5W, 5W
 Voltage: 220-240V
 Beam Spread: 35°
 Rated life: 15 000 h




Energy Smart™ GU10 Dimmable
 Cap: GU10
 Wattage: 5W, 5.5W
 Voltage: 220 – 240V
 Beam Spread: 35°
 Rated life: 25 000 h



Precise™ GU10 Dimmable
 Cap: GU10
 Wattage: 6W
 Voltage: 220 – 240V
 Beam Spread: 20°, 35°
 Rated life: 50 000 h




Energy Smart™ GU10 High Lumen
 Cap: GU10
 Wattage: 6W, 7W
 Voltage: 220 – 240V
 Beam Spread: 35°, 60°
 Rated life: 25 000 h



Energy Smart™ GU10 Warm Dimming
 Cap: GU10
 Wattage: 5W
 Voltage: 220 – 240V
 Beam Spread: 35°
 Rated life: 25 000 h

LED GU10



Start MR16
 Cap: GU5.3
 Wattage: 4W
 Voltage: 12V
 Beam Spread: 35°
 Rated life: 15 000 h



Energy Smart™ MR16 High Lumen
 Cap: GU5.3
 Wattage: 8W
 Voltage: 12V
 Beam Spread: 35°
 Rated life: 25 000 h



Precise™ MR16 Dimmable
 Cap: GU5.3
 Wattage: 8W, 7W
 Voltage: 12V
 Beam Spread: 15°, 25°, 35°
 Rated life: 45 000 h, 25 000 h




Start MR16
 Cap: GU5.3
 Wattage: 5W, 7W
 Voltage: 12V
 Beam Spread: 35°
 Rated life: 15 000 h

LED MR16

Plastic

Glass



LED T8 Plastic High Frequency (ECG)
 Cap: G13
 Wattage: 9W, 18W, 25W
 Op. Frequency: 25 000-85 000Hz
 Rated life: 50 000 h




LED T8 Ultra Glass (CCG/Mains)
 Cap: G13
 Wattage: 23.5W
 Voltage: 220 - 240V
 Op. Frequency: 50/60 Hz
 Rated life: 50 000 h



LED T8 Start Glass (CCG/Mains)
 Cap: G13
 Wattage: 8W, 16W, 20W
 Voltage: 220 - 240V
 Op. Frequency: 50/60 Hz
 Rated life: 15 000 h



LED T8 Premium Plastic Rotatable (CCG/Mains)
 Cap: G13 ROT
 Wattage: 8W, 18W, 25W
 Voltage: 100 - 240V
 Op. Frequency: 50/60 Hz
 Rated life: 50 000 h



LED T8 Value Glass (CCG/Mains)
 Cap: G13
 Wattage: 8W, 14W, 17W, 26.5W, 30W
 Voltage: 100 - 240V
 Op. Frequency: 50/60 Hz
 Rated life: 50 000 h and 40 000 h



LED T8 Starter

LED T8 Tube

LED Plug-ins and LED Mercury




LED 2D*
 Cap: GR8, GR10q
 Wattage: 6.5W, 12.5W
 Rated life: 40 000 h
 Position: Universal



LED 4 pin Plug-in*
 Cap: G24q-3
 Wattage: 12.5W
 Rated life: 50 000 h
 Position: Vertical



LED 4 pin Plug-in*
 Cap: G24q-3
 Wattage: 12.5W
 Rated life: 50 000 h
 Position: Horizontal



LED 4 pin Plug-in Gen2*
 Cap: G24q-2, G24q-3
 Wattage: 7.5W, 10W
 Rated life: 50 000 h
 Position: Horizontal



LED 2 pin Plug-in
 Cap: G24d
 Wattage: 10.5W
 Rated life: 50 000 h
 Position: Horizontal



LED HID
 Cap: E27, E40
 Wattage: 35W, 80W
 Rated life: 50 000 h and 40 000 h
 Position: Universal

* LED 2D ECG and 4 pin Plug-in lamps can't be operated directly from Mains voltage, a CFL ballast is needed

LED Plug-in

Model	Wattage (W)	Watt Replacement	Cap	Product Description	GE Product Code	Tungfram Product Code	Lumen (lm)	CCT (K)	Beam Angle (°)	CRI (Ra)	Rated life L70/B50 (h)	EEC	Energy Consumption (kWh)	Volts (V)	Diameter (mm)	Length (mm)	Pack Qty
Start - GU10																	
1	3.5	35	GU10	LED Start GU10 3.5W(35) 827 35°	93067820	93067831	230	2700	35	80	15k	A+	3.5	220-240	50	53	8
1	3.5	35	GU10	LED Start GU10 3.5W(35) 827 35° 2BX	93067829	-	230	2700	35	80	15k	A+	3.5	220-240	50	53	12
1	3.5	35	GU10	LED Start GU10 3.5W(35) 827 35° 4BX	93087975	-	230	2700	35	80	15k	A+	3.5	220-240	50	53	12
1	3.5	35	GU10	LED Start GU10 3.5W(35) 830 35°	93067822	93094480	240	3000	35	80	15k	A+	3.5	220-240	50	53	8
1	3.5	35	GU10	LED Start GU10 3.5W(35) 840 35°	93067823	93094482	250	4000	35	80	15k	A+	3.5	220-240	50	53	8
1	3.5	35	GU10	LED Start GU10 3.5W(35) 865 35°	93067830	93094484	240	6500	35	80	15k	A+	3.5	220-240	50	53	8
1	5	50	GU10	LED Start GU10 5W(50) 827 35°	93067824	93067832	345	2700	35	80	15k	A+	5	220-240	50	53	8
1	5	50	GU10	LED Start GU10 5W(50) 827 35° 3BX	93077119	-	345	2700	35	80	15k	A+	5	220-240	50	53	12
1	5	50	GU10	LED Start GU10 5W(50) 827 35° BL	93067825	-	345	2700	35	80	15k	A+	5	220-240	50	53	8
1	5	50	GU10	LED Start GU10 5W(50) 827 35° 4BX	93087997	-	345	2700	35	80	15k	A+	5	220-240	50	53	8
1	5	50	GU10	LED Start GU10 5W(50) 827 35° 6BX	93087998	-	345	2700	35	80	15k	A+	5	220-240	50	53	8
1	5	50	GU10	LED Start GU10 5W(50) 830 35°	93067826	93094487	360	3000	35	80	15k	A+	5	220-240	50	53	8
1	5	50	GU10	LED Start GU10 5W(50) 840 35°	93067827	93094489	360	4000	35	80	15k	A+	5	220-240	50	53	8
1	5	50	GU10	LED Start GU10 5W(50) 865 35°	93067828	93094491	360	6500	35	80	15k	A+	5	220-240	50	53	8

Energy Smart™ - GU10 - Dimmable																	
2	5.5	50	GU10	LED ESmart GU10 50-5.5WDim 827 35°	93068474 **	-	360	2700	35	80	25k	A+	5.5	220-240	50	54	8
2	5.5	50	GU10	LED ESmart GU10 50-5.5WDim 827 35° BL	93068477 **	-	360	2700	35	80	25k	A+	5.5	220-240	50	54	8
2	5.5	50	GU10	LED ESmart GU10 50-5.5WDim 830 35°	93068475 **	-	380	3000	35	80	25k	A+	5.5	220-240	50	54	8
2	5.5	50	GU10	LED ESmart GU10 50-5.5WDim 840 35°	93068476 **	-	400	4000	35	80	25k	A+	5.5	220-240	50	54	8
3	5	50	GU10	LED ESmart GU10 5W(50)Dim 827 35°	93095387	93094493	360	2700	35	80	25k	A+	5	220-240	50	54	8
3	5	50	GU10	LED ESmart GU10 5W(50)Dim 827 35° BL	93104927	93104928	360	2700	35	80	25k	A+	5	220-240	50	54	8
3	5	50	GU10	LED ESmart GU10 5W(50)Dim 830 35°	93095389	93094495	380	3000	35	80	25k	A+	5	220-240	50	54	8
3	5	50	GU10	LED ESmart GU10 5W(50)Dim 840 35°	93095391	93094497	400	4000	35	80	25k	A+	5	220-240	50	54	8

Energy Smart™ - GU10 High Lumen - Dimmable																	
2	7	70	GU10	LED7D/GU10/830/220-240V/35/BX 1/8ES	93061056 **	-	500	3000	35	80	25k	A+	7	220-240	50	53.5	8
2	7	64	GU10	LED7D/GU10/830/220-240V/60/BX 1/8ES	93061057 **	-	450	3000	60	80	25k	A+	7	220-240	50	53.5	8
2	7	70	GU10	LED7D/GU10/840/220-240V/35/BX 1/8ES	93061058 **	-	500	4000	35	80	25k	A+	7	220-240	50	53.5	8
2	7	64	GU10	LED7D/GU10/840/220-240V/60/BX 1/8ES	93061058 **	-	450	4000	60	80	25k	A+	7	220-240	50	53.5	8
3	6	70	GU10	LED ESmart GU10 6W(70)Dim 830 35°	93095393	93094499	500	3000	35	80	25k	A+	6	220-240	50	54	8
3	6	75	GU10	LED ESmart GU10 6W(75)Dim 830 60°	93095395	93094501	540	3000	60	80	25k	A+	6	220-240	50	54	8
3	6	70	GU10	LED ESmart GU10 6W(70)Dim 840 35°	93095397	93094503	500	4000	35	80	25k	A+	6	220-240	50	54	8
3	6	75	GU10	LED ESmart GU10 6W(75)Dim 840 60°	93095399	93094505	540	4000	60	80	25k	A+	6	220-240	50	54	8

Energy Smart™ - GU10 Warm Dimming																	
4	5	50	GU10	LED WarmDim GU10 5W(50) 820-827 35°	-	93067834	350	2000-2700	35	80	25k	A+	5	220-240	50	54	8

** will be Phased out



Wattage (W)	Watt Replacement	Cap	Product Description	GE Product Code	Tungfram Product Code	Lumen (lm)	CCT (K)	Beam Angle (°)	CRI (Ra)	Rated life L70/B50 (h)	EEC	Energy Consumption (kWh)	Volts (V)	Diameter (mm)	Length (mm)	Pack Qty	Model
Precise™ - GU10 - Dimmable																	
6	50	GU10	LED Precise GU10 6W(50)Dim 927 20°	93074767	-	350	2700	20	95	50k	A+	6	220-240	50	53	10	5
6	50	GU10	LED Precise GU10 6W(50)Dim 927 35°	93074768	-	350	2700	35	95	50k	A+	6	220-240	50	53	10	5
6	50	GU10	LED Precise GU10 6W(50)Dim 930 20°	93074769	-	370	3000	20	95	50k	A+	6	220-240	50	53	10	5
6	50	GU10	LED Precise GU10 6W(50)Dim 930 35°	93074770	-	370	3000	35	95	50k	A+	6	220-240	50	53	10	5
6	50	GU10	LED Precise GU10 6W(50)Dim 940 20°	93074771	-	400	4000	20	95	50k	A+	6	220-240	50	53	10	5
6	50	GU10	LED Precise GU10 6W(50)Dim 940 35°	93074772	-	400	4000	35	95	50k	A+	6	220-240	50	53	10	5
6	50	GU10	LED Precise GU10 6W(50)Dim 927 20° TU	-	93094507 ***	350	2700	20	95	50k	A+	6	220-240	50	53	10	6
6	50	GU10	LED Precise GU10 6W(50)Dim 927 35° TU	-	93094508 ***	350	2700	35	95	50k	A+	6	220-240	50	53	10	6
6	50	GU10	LED Precise GU10 6W(50)Dim 930 20° TU	-	93094509 ***	370	3000	20	95	50k	A+	6	220-240	50	53	10	6
6	50	GU10	LED Precise GU10 6W(50)Dim 930 35° TU	-	93094510 ***	370	3000	35	95	50k	A+	6	220-240	50	53	10	6
6	50	GU10	LED Precise GU10 6W(50)Dim 940 20° TU	-	93094511 ***	400	4000	20	95	50k	A+	6	220-240	50	53	10	6
6	50	GU10	LED Precise GU10 6W(50)Dim 940 35° TU	-	93094512 ***	400	4000	35	95	50k	A+	6	220-240	50	53	10	6

Start - MR16																	
4	35	GU5.3	LED4/MR16/827/12V/GU5.3/35 BX1/8ST	93061069 **	93077117 **	350	2700	35	80	15k	A+	4	12	50	45	8	7
5	35	GU5.3	LED Start MR16 5W(35) 827 35° TU 1/8	93095381	93094225	350	2700	35	80	15k	A+	5	12	50	45	8	8
4	35	GU5.3	LED4/MR16/830/12V/GU5.3/35 BX1/8ST	93061070 **	-	350	3000	35	80	15k	A+	4	12	50	45	8	7
5	35	GU5.3	LED Start MR16 5W(35) 830 35° TU 1/8	93095383	93094457	350	3000	35	80	15k	A+	5	12	50	45	8	8
4	35	GU5.3	LED4/MR16/840/12V/GU5.3/35 BX1/8ST	93061071 **	-	360	4000	35	80	15k	A+	4	12	50	45	8	7
5	35	GU5.3	LED Start MR16 5W(35) 840 35° TU 1/8	93095385	93094459	360	4000	35	80	15k	A+	5	12	50	45	8	8
7	50	GU5.3	LED Start MR16 7W(50) 827 35° GE 1/8	93094461	93094467	621	2700	35	80	15k	A+	7	12	50	45	8	9
7	50	GU5.3	LED Start MR16 7W(50) 830 35° GE 1/8	93094463	93094469	621	3000	35	80	15k	A+	7	12	50	45	8	9
7	50	GU5.3	LED Start MR16 7W(50) 840 35° GE 1/8	93094465	93094471	621	4000	35	80	15k	A+	7	12	50	45	8	9

Energy Smart™ - MR16 High Lumen - Dimmable																	
8	50	GU5.3	LED ESmart MR16 8W(50)Dim 827 35°	93061066	93094473	621	2700	35	80	25k	A+	8	12	50	46	8	10
8	50	GU5.3	LED ESmart MR16 8W(50)Dim 830 35°	93061067	93094475	621	3000	35	80	25k	A+	8	12	50	46	8	10
8	50	GU5.3	LED ESmart MR16 8W(50)Dim 840 35°	93061068	93094477	630	4000	35	80	25k	A+	8	12	50	46	8	10

Precise™ - MR16 - Dimmable																	
8	35	GU5.3	LED Precise MR16 8W(35)Dim 927 15°	93074773	-	380	2700	15	90	25k	A	8	12	50	46	8	11
8	35	GU5.3	LED Precise MR16 8W(35)Dim 927 35°	93074774	-	380	2700	35	90	25k	A	8	12	50	46	8	11
7	50	GU5.3	LED7XD/MR16G/830/12V/15 BX1/8	93048800 **	-	490	3000	15	80	45k	A+	7	12	50	47.5	8	11
7	50	GU5.3	LED7XD/MR16G/830/12V/25 BX1/8	93048799 **	-	490	3000	25	80	45k	A+	7	12	50	45.5	8	11
8	35	GU5.3	LED Precise MR16 8W(35)Dim 930 15°	93061062	-	380	3000	15	90	25k	A	8	12	50	48	8	11
8	35	GU5.3	LED Precise MR16 8W(35)Dim 930 35°	93061063	-	380	3000	35	90	25k	A	8	12	50	46	8	11
8	35	GU5.3	LED Precise MR16 8W(35)Dim 940 15°	93061064	-	400	4000	15	90	25k	A	8	12	50	46	8	11
8	35	GU5.3	LED Precise MR16 8W(35)Dim 940 35°	93061065	-	400	4000	35	90	25k	A	8	12	50	48	8	11

** will be Phased out

*** glass housing, available from Q2 2019



Model	Wattage (W)	Length (mm)	Volts (V)	Cap	Product Description	GE Product Code	Tungstrom Product Code	Lumen (lm)	CCT (K)	Beam Angle (°)	CRI (Ra)	Rated life L70 (h)	Diameter (mm)	Energy Consumption (kWh/h)	EEC	Pack Qty
-------	-------------	-------------	-----------	-----	---------------------	-----------------	------------------------	------------	---------	----------------	----------	--------------------	---------------	----------------------------	-----	----------

LED T8 Plastic - High Frequency (ECG)

1	9	600	50-110V	G13	LED 9/T8 PHF 2ft/840	93041503	-	1 200	4000	150	80<	50k	28	11	A+	10
1	18	1200	50-110V	G13	LED 18/T8 PHF 4ft/830*	93041505	-	2 100	3000	150	80<	50k	28	22	A+	10
1	18	1200	50-110V	G13	LED 18/T8 PHF 4ft/840	93041836	-	2 300	4000	150	80<	50k	28	21	A+	10
1	18	1200	50-110V	G13	LED 18/T8 PHF 4ft/865*	93041837	-	2 300	6500	150	80<	50k	28	21	A+	10
1	25	1500	50-110V	G13	LED 25/T8 PHF 5ft/840	93041839	-	3 400	4000	150	80<	50k	28	29	A+	10
1	25	1500	50-110V	G13	LED 25/T8 PHF 5ft/865*	93041840	-	3 400	6500	150	80<	50k	28	29	A+	10

LED T8 Premium Plastic - Rotatable (CCG/Mains)

2	8	600	100-240V	G13 Rot	LED 8/T8 PPR 2ft/830	93072626	-	1 100	3000	170	80<	50k	28	8	A++	10
2	8	600	100-240V	G13 Rot	LED 8/T8 PPR 2ft/840	93072627	-	1 200	4000	170	80<	50k	28	8	A++	10
2	8	600	100-240V	G13 Rot	LED 8/T8 PPR 2ft/865	93072628	-	1 200	6500	170	80<	50k	28	8	A++	10
2	18	1200	100-240V	G13 Rot	LED 18/T8 PPR 4ft/830	93072629	-	2 300	3000	170	80<	50k	28	18	A++	10
2	18	1200	100-240V	G13 Rot	LED 18/T8 PPR 4ft/840	93072630	-	2 500	4000	170	80<	50k	28	18	A++	10
2	18	1200	100-240V	G13 Rot	LED 18/T8 PPR 4ft/865	93072631	-	2 500	6500	170	80<	50k	28	18	A++	10
2	25	1500	100-240V	G13 Rot	LED 25/T8 PPR 5ft/830	93072632	-	3 350	3000	170	80<	50k	28	25	A++	10
2	25	1500	100-240V	G13 Rot	LED 25/T8 PPR 5ft/840	93072633	-	3 600	4000	170	80<	50k	28	25	A++	10
2	25	1500	100-240V	G13 Rot	LED 25/T8 PPR 5ft/865	93072634	-	3 600	6500	170	80<	50k	28	25	A++	10

LED T8 Ultra Glass (CCG/Mains)

3	23,5	1500	220-240V	G13	LED T8 UG 1,5m 23,5W 830**	-	93098374	3350	3000	200	80<	50k	28	23,5	A++	10
3	23,5	1500	220-240V	G13	LED T8 UG 1,5m 23,5W 840**	-	93098375	3650	4000	200	80<	50k	28	23,5	A++	10
3	23,5	1500	220-240V	G13	LED T8 UG 1,5m 23,5W 865**	-	93098376	3650	6500	200	80<	50k	28	23,5	A++	10

LED T8 Value Glass (CCG/Mains)

3	8	600	100-240	G13	LED 8/T8VG 0,6m/830	93076819	-	950	3000	200	80<	50k	28	8	A+	15
3	8	600	100-240	G13	LED 8/T8VG 0,6m/840	93076820	-	1 000	4000	200	80<	50k	28	8	A+	15
3	8	600	100-240	G13	LED 8/T8VG 0,6m/865	93076821	-	1 000	6500	200	80<	50k	28	8	A+	15
3	14	1200	100-240	G13	LED 14/T8VG 1,2m/840	93076822	-	1 750	4000	200	80<	50k	28	14	A+	15
3	14	1200	100-240	G13	LED 14/T8VG 1,2m/865	93076823	-	1 750	6500	200	80<	50k	28	14	A+	15
3	17	1200	100-240	G13	LED 17/T8VG 1,2m/830	93076824	-	2 000	3000	200	80<	50k	28	17	A+	15
3	17	1200	100-240	G13	LED 17/T8VG 1,2m/840	93076825	-	2 100	4000	200	80<	50k	28	17	A+	15
3	17	1200	100-240	G13	LED 17/T8VG 1,2m/865	93076926	-	2 100	6500	200	80<	50k	28	17	A+	15
3	26,5	1500	100-240	G13	LED 26,5/T8VG 1,5m/830	93080089	-	3 000	3000	200	80<	50k	28	26,5	A+	10
3	26,5	1500	100-240	G13	LED 26,5/T8VG 1,5m/840	93080090	-	3 100	4000	200	80<	50k	28	26,5	A+	10
3	26,5	1500	100-240	G13	LED 26,5/T8VG 1,5m/865	93080091	-	3 100	6500	200	80<	50k	28	26,5	A+	10
3	30	1800	220-240	G13	LED 30/T8 VG 6ft/830	93040746	-	3 300	3000	200	80<	40k	28	30	A+	10
3	30	1800	220-240	G13	LED 30/T8 VG 6ft/840	93040747	-	3 600	4000	200	80<	40k	28	30	A+	10
3	30	1800	220-240	G13	LED 30/T8 VG 6ft/865	93040748	-	3 600	6500	200	80<	40k	28	30	A+	10

* Phasing out
** Coming in Q2



Wattage (W)	Length (mm)	Volts (V)	Cap	Product Description	GE Product Code	Tungstrom Product Code	Lumen (lm)	CCT (K)	Beam Angle (°)	CRI (Ra)	Rated life L70 (h)	Diameter (mm)	Energy Consumption (kWh/h)	EEC	Pack Qty	Model
-------------	-------------	-----------	-----	---------------------	-----------------	------------------------	------------	---------	----------------	----------	--------------------	---------------	----------------------------	-----	----------	-------

LED T8 Start Glass (CCG/Mains)

8	600	220-240	G13	LED 8/T8SG 15k 0.6m/830	93088826	93092509	750	3000	200	80<	15k	28	8	A+	15	3
8	600	220-240	G13	LED 8/T8 SGM 2ft/840*	93068755	-	800	4000	200	80<	15k	28	8	A+	15	3
8	1200	220-240	G13	LED 8/T8SG 15k 0.6m/840	93088827	93092510	800	4000	200	80<	15k	28	8	A+	15	3
8	1200	220-240	G13	LED 8/T8 SGM 2ft/865*	93069176	-	800	6500	200	80<	15k	28	8	A+	15	3
8	1500	220-240	G13	LED 8/T8SG 15k 0.6m/865	93088828	93092511	800	6500	200	80<	15k	28	8	A+	15	3
16	1500	220-240	G13	LED 16/T8SG 15k 1.2m/830	93088829	93092512	1550	3000	200	80<	15k	28	16	A+	15	3
16	600	220-240	G13	LED 16/T8 SGM 4ft/840*	93069177	-	1 700	4000	200	80<	15k	28	16	A+	15	3
16	1200	220-240	G13	LED 16/T8SG 15k 1.2m/840	93088830	93092513	1600	4000	200	80<	15k	28	16	A+	15	3
16	1200	220-240	G13	LED 16/T8 SGM 4ft/865*	93069178	-	1 700	6500	200	80<	15k	28	16	A+	15	3
16	1200	220-240	G13	LED 16/T8SG 15k 1.2m/865	93088831	93092514	1600	6500	200	80<	15k	28	16	A+	15	3
20	1500	220-240	G13	LED 20/T8SG 15k 1.5m/830	93088832	93092515	2000	3000	200	80<	15k	28	20	A+	15	3
20	1500	220-240	G13	LED 20/T8SG 15k 1.5m/840	93088833	93092516	2050	4000	200	80<	15k	28	20	A+	15	3
20	1500	220-240	G13	LED 20/T8SG 15k 1.5m/865	93088834	93092517	2050	6500	200	80<	15k	28	20	A+	15	3

LED T8 Starter

LED T8 StartFIX	93094701	93094704	25/100	4
-----------------	----------	----------	--------	---

* Phasing out
** Coming in Q2



Quick guide how to replace existing fluorescence tubes with LED T8 tubes:

- Fluorescent T8 on High Frequency Electronic Control Gear (ECG) – No Fluorescent Starter is used > replace with LED T8 Plastic HF
- Fluorescent T8 on Electromagnetic Conventional Control Gear (CCG/Mains) – Fluorescent Starter is present >
 - Option 1. Replace with LED Starter & LED T8 PPR/VGR/VG/SG, or
 - Option 2. Remove Fluorescent Starter and refit LED T8 with direct connection to Mains (No Live connection at open end on GE LED T8!)

LED Retrofit Solutions

LED Plug-in

Simple plug-and-play replacement without tools

LED Plug-in replacement lamps offer an extremely attractive upgrade path from traditional Compact Fluorescent Lamps (CFL).

With simple and reliable plug-and-play installation for both horizontal and vertical configurations, and arrange that covers 2D lamps and 2 Pin/4 Pin Plug-in lamps, we have made it easier than ever to take advantage of all the advantages of LED technology.

Benefits of our retrofit LED Plug-in products compared with CFLs include energy savings of up to 60%, up to 3x the working life and a more uniform light that is ideal for retail, hospitality and commercial applications. The result is a dramatic reduction in operating costs and equally impressive improvements in the quality of light.



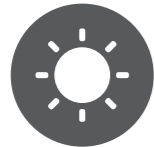
Significant cost savings

- Energy savings of up to 60%
- More targeted light



Long life, low maintenance

- Up to 3x longer life vs. average CFL
- Up to 50 000 hours rated life (L70)



Reliable, high quality light

- Instant on, no flicker
- Excellent colour rendering CRI 80+
- Colour options 2700/3000/3500/4000/6500K



Quick and easy installation

- For 2D lamps with GR8 or GR10q socket, or Plug-in lamps with G24d, G24q-2 or G24q-3 CFL socket
- No installation tools required
- Rotatable base to adjust lamp into perfect position



Environmentally friendly solutions

- Reduced carbon footprint
- No harmful lead or mercury
- Fully compliant with material restriction requirements of RoHS

LED Retrofit Solutions

LED HID

LED HID lamps offer safe, reliable and affordable energy saving alternative to traditional HID lamps used in outdoor and industrial applications.

This replacement can be completed simply without costly upgrade. The robust lamp design with E27 / E40 base ensures retrofitting and easy handle during installation. The upgraded fixture will deliver up to 80% energy saving and reduced operating cost driven by 2-4x longer life compared to an average HID lamp. The classic shape and optimized, uniform light distribution of this range makes it easier than ever to switch existing fixtures to a high quality LED solution.

Retrofit alternative for HID installations



UP TO 80%
ENERGY SAVING



RETROFIT
SOLUTION



HIGH EFFICIENCY OF
150LM/W AND
UNIFORM LIGHT DISTRIBUTION



LED Retrofit Solutions / LED Plug-in

Model	Wattage (W)	Ballast Compatibility	Cap	Product Description	GE Product Code	Tungstrom Product Code	Lumen (lm)	CCT (K)	Beam Angle (°)	CRI (Ra)	Rated life L70 (h)	Size (mm)	Energy Consumption (kWh)	EEC	Pack Qty	Replacement for
LED 2D																
1	6.5	magnetic	GR8	LED 2D2P 6.5W/CCG/827/GR8 GE BX1/10	93039469	-	750 2700	120 x 130	80+	40k	136 x 132	6.5	A+	10		
1	6.5	magnetic	GR8	LED 2D2P 6.5W/CCG/830/GR8 GE BX1/10	93039470	-	770 3000	120 x 130	80+	40k	136 x 132	6.5	A+	10	16W	
1	6.5	magnetic	GR8	LED 2D2P 6.5W/CCG/835/GR8 GE BX1/10	93039471	-	800 3500	120 x 130	80+	40k	136 x 132	6.5	A+	10	CFL 2D	
1	6.5	magnetic	GR8	LED 2D2P 6.5W/CCG/840/GR8 GE BX1/10	93039475	-	830 4000	120 x 130	80+	40k	136 x 132	6.5	A+	10		
2	12.5	electronic	GR10q	LED 2D4P 12.5W/ECG/827/GR10q GE BX1/10	93039478 *	-	1400 2700	120 x 130	80+	40k	201 x 188	12.5	A+	10		
2	12.5	electronic	GR10q	LED 2D4P 12.5W/ECG/835/GR10q GE BX1/10	93039477 *	-	1500 3500	120 x 130	80+	40k	201 x 188	12.5	A+	10		
2	12.5	electronic	GR10q	LED 2D4P 12.5W/ECG/840/GR10q GE BX1/10	93039476 *	-	1550 4000	120 x 130	80+	40k	201 x 188	12.5	A+	10	28W	
2	12.5	magnetic	GR10q	LED 2D4P 12.5W/CCG/827/GR10q GE BX1/10	93039473	-	1400 2700	120 x 130	80+	40k	201 x 188	12.5	A+	10	CFL 2D	
2	12.5	magnetic	GR10q	LED 2D4P 12.5W/CCG/835/GR10q GE BX1/10	93039472	-	1500 3500	120 x 130	80+	40k	201 x 188	12.5	A+	10		
2	12.5	magnetic	GR10q	LED 2D4P 12.5W/CCG/840/GR10q GE BX1/10	93039474	-	1550 4000	120 x 130	80+	40k	201 x 188	12.5	A+	10		

* Visit this website for list of ballasts tested and approved for compatibility: gelighting.com/LEDPlugIn-compatibility

Model	Wattage (W)	Burning Position	Cap	Product Description	GE Product Code	Tungstrom Product Code	Lumen (lm)	CCT (K)	Beam Angle (°)	CRI (Ra)	Rated life L70 (h)	Length (mm)	Width / Diameter (mm)	Energy Consumption (kWh)	EEC	Pack Qty	Replacement for
LED 4 Pin Plug-in*																	
3	12.5	Horizontal	G24q-3	LED 12.5/G24q-3/4P/H/827 GE BX1/6	93019485 **	-	1250 2700	100 x 75	80+	50k	132	35	12.5	A+	6		
3	12.5	Horizontal	G24q-3	LED 12.5/G24q-3/4P/H/830 GE BX1/6	93019486 **	-	1290 3000	100 x 75	80+	50k	132	35	12.5	A+	6		
3	12.5	Horizontal	G24q-3	LED 12.5/G24q-3/4P/H/865 GE BX1/6	93019488 **	-	1350 6500	100 x 75	80+	50k	132	35	12.5	A+	6		
4	12.5	Vertical	G24q-3	LED 12.5/G24q-3/4P/V/827 GE BX1/6	93024415 **	-	1250 2700	87	80+	50k	144	94	12.5	A+	6	26/32W CFL	
4	12.5	Vertical	G24q-3	LED 12.5/G24q-3/4P/V/830 GE BX1/6	93024294 **	-	1290 3000	87	80+	50k	144	94	12.5	A+	6		
4	12.5	Vertical	G24q-3	LED 12.5/G24q-3/4P/V/840 GE BX1/6	93024110 **	-	1300 4000	87	80+	50k	144	94	12.5	A+	6		
4	12.5	Vertical	G24q-3	LED 12.5/G24q-3/4P/V/865 GE BX1/6	93024109 **	-	1350 6500	87	80+	50k	144	94	12.5	A+	6		

* Visit this website for list of ballasts tested and approved for compatibility: gelighting.com/LEDPlugIn-compatibility

** - will be phased out



LED Retrofit Solutions / LED Plug-in

Wattage (W)	Burning Position	Cap	Product Description	GE Product Code	Tungstrom Product Code	Lumen (lm)	CCT (K)	Beam Angle (°)	CRI (Ra)	Rated life L70 (h)	Length (mm)	Width / Diameter (mm)	Energy Consumption (kWh)	EEC	Pack Qty	Replacement for	Model
LED 4 Pin Plug-in Gen2 *																	
7.5	Horizontal	G24q-2	LED 7.5/G2/G24q-2/4P/H/830 GE BX1/6	93060370	-	850 3000	110 x 120	80+	50k	132	34.5	7.5	A+	6			5
7.5	Horizontal	G24q-2	LED 7.5/G2/G24q-2/4P/H/840 GE BX1/6	93060371	-	880 4000	110 x 120	80+	50k	132	34.5	7.5	A+	6		18W CFL	5
7.5	Horizontal	G24q-2	LED 7.5/G2/G24q-2/4P/H/865 GE BX1/6	93060372	-	900 6500	110 x 120	80+	50k	132	34.5	7.5	A+	6			5
10	Horizontal	G24q-3	LED 10/G2/G24q-3/4P/H/830 GE BX1/6	93060367***	-	1150 3000	110 x 120	80+	50k	132	34.5	10	A+	6			5
10	Horizontal	G24q-3	LED 10/G2/G24q-3/4P/H/840 GE BX1/6	93060368	-	1170 4000	110 x 120	80+	50k	132	34.5	10	A+	6		26/32W CFL	5
10	Horizontal	G24q-3	LED 10/G2/G24q-3/4P/H/865 GE BX1/6	93060369***	-	1200 6500	110 x 120	80+	50k	132	34.5	10	A+	6			5

* Visit this website for list of ballasts tested and approved for compatibility: gelighting.com/LEDPlugIn-compatibility

*** - product available from Q3, please check Gen1 range

Wattage (W)	Burning Position	Cap	Product Description	GE Product Code	Tungstrom Product Code	Lumen (lm)	CCT (K)	Beam Angle (°)	CRI (Ra)	Rated life L70 (h)	Length (mm)	Width / Diameter (mm)	Energy Consumption (kWh)	EEC	Pack Qty	Replacement for	Model
LED 2 Pin Plug-in																	
10.5	Horizontal	G24d	LED 10.5/G24d/2P/H/830 GE BX1/6	93051476	-	1050 3000	110 x 120	80+	50k	165	34.5	10.5	A+	6			6
10.5	Horizontal	G24d	LED 10.5/G24d/2P/H/840 GE BX1/6	93051477	-	1050 4000	110 x 120	80+	50k	165	34.5	10.5	A+	6		13/18/26W CFL	6
10.5	Horizontal	G24d	LED 10.5/G24d/2P/H/865 GE BX1/6	93051521	-	1050 6500	110 x 120	80+	50k	165	34.5	10.5	A+	6			6

Wattage (W)	Burning Position	Cap	Product Description	GE Product Code	Tungstrom Product Code	Lumen (lm)	CCT (K)	Beam Angle (°)	CRI (Ra)	Rated life L70 (h)	Length (mm)	Diameter (mm)	Energy Consumption (kWh)	EEC	Replacement for	Pack Qty	Model
LED HID																	
35	Universal	E27	LED 35W/Mercury/730/E27 GE BX1/6	93038710	-	4750 3000	360	70+	40k	175	76	A+			80/125W	6	7
35	Universal	E27	LED 35W/Mercury/740/E27 GE BX1/6	93038711	-	4800 4000	360	70+	40k	175	76	A++			HID Mercury	6	7
80	Universal	E40	LED 80W/HID/740/E40 GE	93067075	-	12000 4000	360	70+	50k	203	92.2	A++			250W	1	8
80	Universal	E40	LED 80W/HID/750/E40 GE	93067246	-	12000 5000	360	70+	50k	203	92.2	A++			QMH	1	8
150	Universal	E40	LED 150W/HID/740/E40 TU	-	93094721	23000 4000	360	70+	50k	211	103.9	-			250W	1	9
150	Universal	E40	LED 150W/HID/750/E40 TU	-	93094722	23000 5000	360	70+	50k	211	103.9	-			CMH	1	9





LED Indoor Fixtures





High quality LED solutions at an affordable price

From future-proof modular solutions to innovative new formats, we deliver high quality LED solutions at an affordable price.

Our LED Fundamental Fixtures portfolio is the latest example of this, a comprehensive range of economical indoor lighting products for just about any and every application and across all market sectors.

This range has been designed to offer a highly attractive combination of light quality, colour reproduction, product reliability and energy efficiency. Simplicity of installation and operation are key benefits too, enabling quick and easy replacement of traditional technologies such as LFL, CFL and HID fixtures.

The LED Fundamental Fixtures range includes panels, downlighters, batten, bulkheads, waterproof solutions, floodlights, high & low bay fixtures in various sizes and wide selection of Lumens packages. These fixtures deliver a cost effective upgrade path across all major vertical market areas including:

- Office/commercial buildings
- Retail
- Hospitality
- Industrial
- Airports

Batten
_ page 41

2D & Integrated Bulkhead
_ page 44

Edgelit Panel
_ page 40

Batten Switch
_ page 41

Eco, Diffuser & Slim Downlight
_ page 42-43

Recessed Spotlight
_ page 43

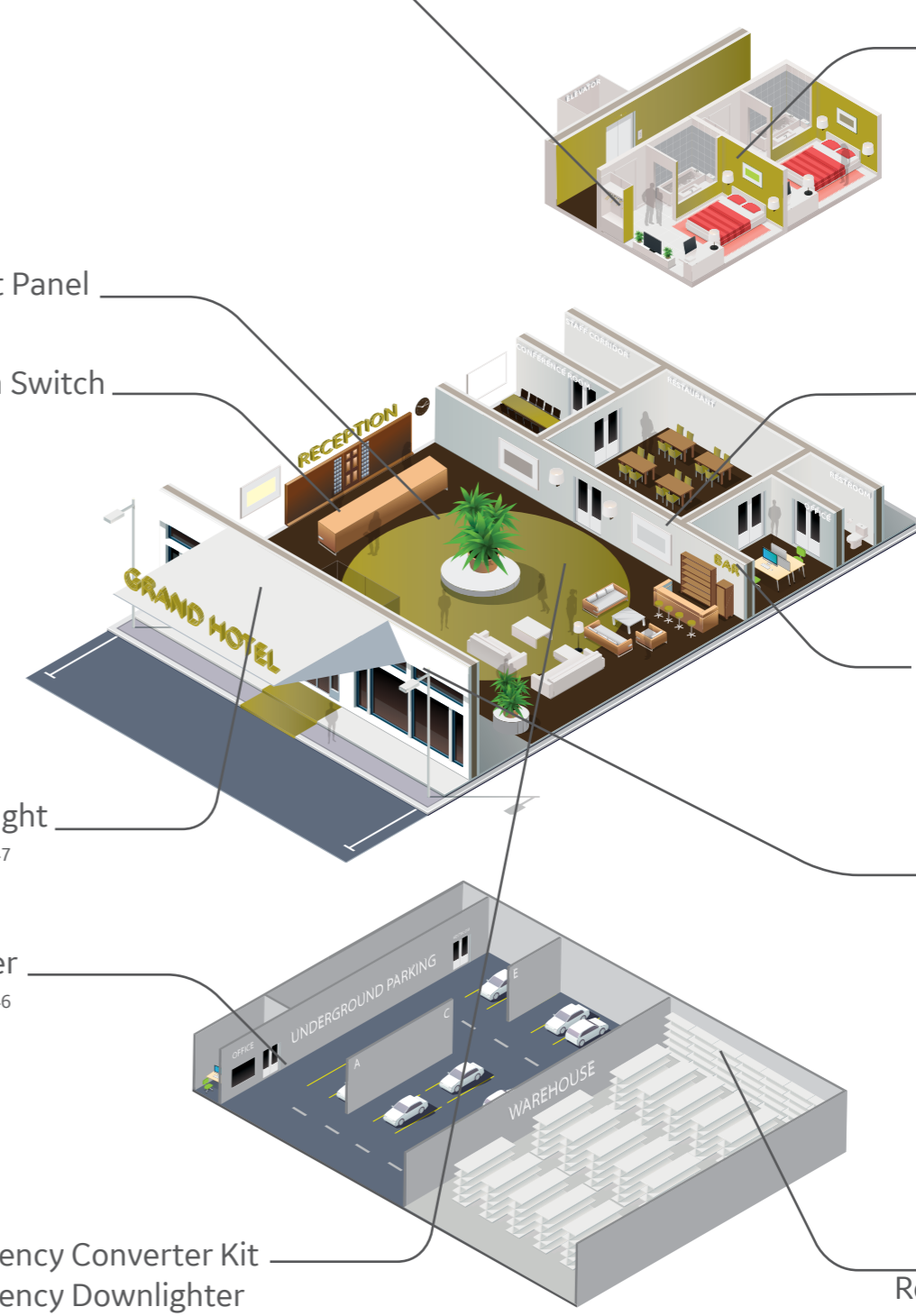
Floodlight
_ page 46-47

Soft Strip
_ page 47

Mariner
_ page 45-46

Emergency Converter Kit
Emergency Downlighter
_ page 48

HB IP66
Round High Bay IP65
_ page 48-53



The fundamentals

Edgelit Panel Premium and Eco G2

This stylish panels combine sleek and appealing aesthetics with exceptional efficiency – the perfect LED replacement for fluorescent fixtures in T-grid suspended ceilings.

- Energy efficient up to 120lm/W
- Uniform illumination – no visible diodes
- No-flicker static and Dali driver versions are available
- IP54 and high lumen versions

T5 Batten ECO & Switch

A versatile and energy efficient LED T5 batten, enabling easy replacement of traditional products for significant energy savings and reduced maintenance costs.

- Suitable for wall mounting, stand-alone and continuous row mount
- Choice of 4 length in 4 wattages both for ECO and Switch
- Long rated life of 30 000 hours (L70)

Downlighter ranges

Our LED downlight range includes three different design options (ECO, Diffusor and Slim) offering easy, direct and cost-effective replacement of equivalent compact fluorescent lamps

- Wide range of sizes and color temperature options
- Affordable solution for retrofit or new installations
- Long rated life of 45 000 hours (L70)
- Slim version also available with Dali control

Recessed Spotlight and Spotlight Gen2

This Spotlight LED fixture range will be ideal replacement for Halogen MR16/GU10 installations, offering high efficiency, adjustable beam and long life.

- Quick and easy installation
- IP65 and dimmable versions available

2D Bulkhead

This elegant interior fitting is suitable for wall or ceiling mounting. Designed with a replaceable LED 2D lamp and Clear or Opal diffuser options. It combines high performance with outstanding efficiency.

- Outstanding efficiency up to 128 lm/W
- Fixture includes replaceable 2D lamp

Integrated Bulkhead

A simple and elegant light fitting, designed with Integrated LED Light Module both for interior and exterior applications.

- Available with integrated motion and daylight sensor and/or also with 3hrs Integrated Emergency
- New size (ø330mm) launched in TUNGSRAM brand

Waterproof Mariner Integrated Premium and Start

An ideal solution for a wide range of low bay lighting applications, the Integrated Mariner is a waterproof (IP65), energy

- efficient, low maintenance alternative to traditional LFLs and offers quick and easy installation.
- Quick connector design, continuous connection option
- Premium version is available in 1200/1500mm, Start version is available in 600/1200/1500mm length
- Outstanding efficiency up to 126 lm/W
- No-flicker driver
- Dali (30&49W) and sensor options

Waterproof Mariner Empty Body

A range of waterproof fittings (IP65) suitable for surface mounting applications and compatible with T8 LED tubes on mains voltage.

- Single/twin lamp versions for 1200mm and 1500 mm
- Prewired for easy installation of AC T8 LED lamps
- Continuous connection option
- Wide range of compatible GE&TUNGSRAM T8 LED Tubes are available

Floodlight

This universal, compact range of fixtures is suitable for various applications around buildings. Thanks to a robust aluminium housing with safety glass cover, it's ideal for outdoor use.

- Available in 6 lumen packages
- Outstanding efficiency up to 130 lm/W
- Motion sensor option up to 50W
- Asymmetrical optic option for 115&150W versions

Round High bay IP65

The new fixture range with round shape can be ideal solution for replacement of traditional high bay luminaires with mercury vapor or metal halide lamps. The outstanding 135lm/W efficacy and IP65 protection rate is ideal for indoor and semi-outdoor applications like warehouses, logistic halls, industrial buildings and retail.

- Available in 4 lumen packages (up to 27k lumen)
- 110 degree standard optic can be adjusted to 60/90 degree with lampshades (except 200W)
- 0-10V and Dali (150 & 200W) control optional

Emergency Converter Kit for Edgelit Panels and Slim Downlighters and standalone Emergency Downlighter

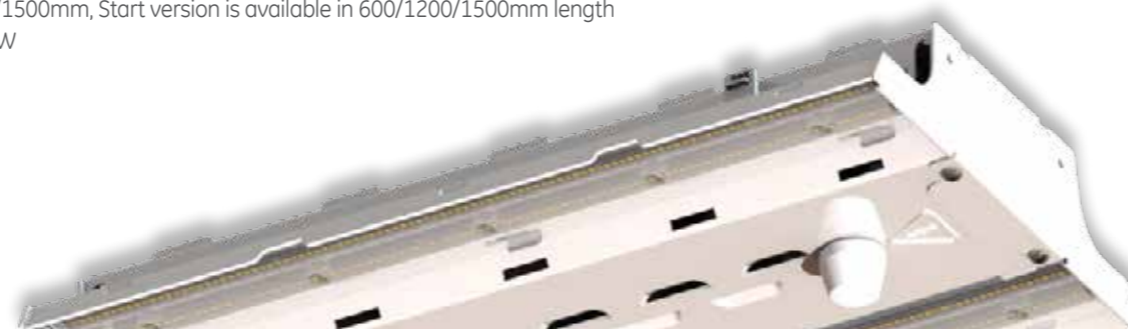
Our Emergency solutions are designed and built using leading LED technologies and the best components, to offer a range of solutions for recessed installation in a wide range of commercial applications. Our Emergency Converter Kits can be connected to our Edgelit Panel and Slim Downlighter series. The Emergency Downlighters can be used as a standalone solution in many applications. The applied LiFePO4 batteries can provide longer lifetime than NiCd and NiMH technologies.

- Both ranges are available in Non-Maintained, Self-test and Dali versions
- Corridor and Area function is optional in Emergency Downlighter range

New Tungsram High Bay IP20 and IP66

The new Tungsram High Bay range replaces the high bay ABV G2 IP20 and high bay IP66 ranges.

- All products in this range are Made in Hungary
- Rated life up to 100.000 hours (L80)
- Ambient temperature up to 60C
- Efficiency for the S range 140-150lm/W, for the H range 160-185 lm/W
- Lumen package options up to 30,000 lm
- Optics: 120, 90, 60 and 30
- Available with various control and sensor options





Edgelit Panel Premium / Premium Dali / Eco



Edgelit Panel Accessories



Slim Downlighter / Dali



ECO Downlighter



Diffusor Downlighter



T5 Batten ECO



T5 Batten Switch



Recessed Spotlight



2D Bulkhead



Integrated Bulkhead



Emergency Spotlight



Waterproof Mariner - Integrated



Waterproof Mariner ECO - Integrated



Waterproof Mariner - Empty Body



Round High-bay



Floodlight



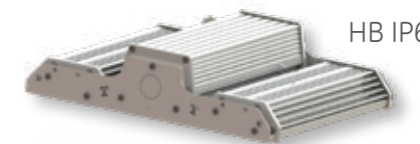
Floodlight Sensor



HB IP20



HB IP66



HB IP66



Soft Strip



Emergency converter

LED Indoor Solutions / Indoor Fixtures

LED Indoor Solutions / Indoor Fixtures

Model	Wattage (W)	Product Description	Tungram Product Code	GE Product Code	Lumen (lm)	CCT (K)	Rated life L70 (h)	IP	System Efficiency (lm/W)	CRI (Ra)	Dimensions (mm)	Ambient Temperature	EEC	Weight (kg)	Beam angle (°)	UGR
-------	-------------	---------------------	----------------------	-----------------	------------	---------	--------------------	----	--------------------------	----------	-----------------	---------------------	-----	-------------	----------------	-----

Edgelit Panel Premium - Static driver

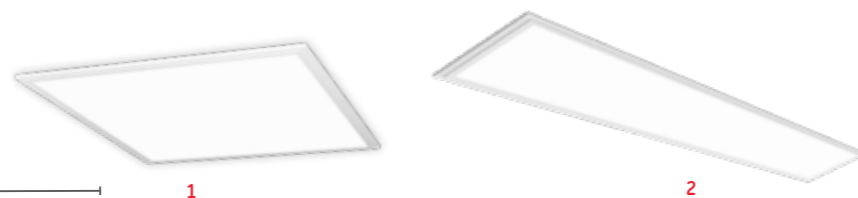
1	30	LED Panel P1 TU 2x2 S 30W 830 21	93101657	93054167	3 400	3000	50k	20	113	80+	595x595x10	-10 to +40 A+	3,4	110	21
1	30	LED Panel P1 TU 2x2 S 30W 830 19	93101659	93054169	3 200	3000	50k	20	105	80+	595x595x10	-10 to +40 A+	3,4	80	<19
1	30	LED Panel P1 TU 2x2 S 30W 840 21	93101658	93054168	3 600	4000	50k	20	120	80+	595x595x10	-10 to +40 A+	3,4	110	21
1	30	LED Panel P1 TU 2x2 S 30W 840 19	93101660	93074731	3 400	4000	50k	20	113	80+	595x595x10	-10 to +40 A+	3,4	80	<19
1	30	LED Panel P1 TU 2x2 S 30W 865 21	93107537	93059583	3 600	6500	50k	20	120	80+	595x595x10	-10 to +40 A+	3,4	110	21
1	30	LED Panel P1 TU 2x2 S 30W 862 19	93107539	93059586	3 500	6200	50k	20	113	80+	595x595x10	-10 to +40 A+	3,4	80	<19
2	30	LED Panel P1 TU 1x4 S 30W 830 21	93108083	93059584	3 300	3000	50k	20	110	80+	295x1195x10	-10 to +40 A+	3,3	110	21
2	30	LED Panel P1 TU 1x4 S 30W 830 19	93101675	93059587	3 300	3000	50k	20	110	80+	295x1195x10	-10 to +40 A+	3,3	80	<19
2	30	LED Panel P1 TU 1x4 S 30W 840 21	93107525	93059567	3 600	4000	50k	20	120	80+	295x1195x10	-10 to +40 A+	3,3	110	21
2	30	LED Panel P1 TU 1x4 S 30W 840 19	93107526	93059568	3 400	4000	50k	20	113	80+	295x1195x10	-10 to +40 A+	3,3	80	<19
2	30	LED Panel P1 TU 1x4 S 30W 865 21	93107538	93059585	3 300	6500	50k	20	110	80+	295x1195x10	-10 to +40 A+	3,3	110	21
2	30	LED Panel P1 TU 1x4 S 30W 865 19	93107540	93059588	3 300	6500	50k	20	110	80+	295x1195x10	-10 to +40 A+	3,3	80	<19
2	59	LED Panel P1 TU 1x4 S 59W 840 21 HO	93104956	-	6 300	4000	50k	40/20	107	80+	295x1195x10	-10 to +40 A+	2,8	110	21
2	59	LED Panel P1 TU 1x4 S 59W 840 19 HO	93104957	-	5 900	4000	50k	40/20	100	80+	295x1195x10	-10 to +40 A+	2,8	80	<19
2	59	LED Panel P1 TU 2x4 S 59W 840 21/2	93104958	-	6 300	4000	50k	40/20	107	80+	595x1195x13	-10 to +40 A+	6,5	110	21
2	59	LED Panel P1 TU 2x4 S 59W 840 19/2	93104959	-	6 000	4000	50k	40/20	102	80+	595x1195x13	-10 to +40 A+	6,5	80	<19
1	30	LED Panel P1 TU 2x2 S 30W 840 21 IP54	93104960	-	3 400	4000	50k	54/20	113	80+	595x595x13	-10 to +40 A+	3,6	110	21
1	30	LED Panel P1 TU 2x2 S 30W 840 19 IP54	93104961	-	3 300	4000	50k	54/20	110	80+	595x595x13	-10 to +40 A+	3,6	80	<19

Edgelit Panel Premium DALI driver

1	40	LED Panel P1 TU 2x2 D 40W 830 21	93101669	93059005	4 200	3000	50k	20	105	80+	595x595x10	-10 to +40 A+	3,4	110	21
1	40	LED Panel P1 TU 2x2 D 40W 830 19	93101670	93059576	4 200	3000	50k	20	105	80+	595x595x10	-10 to +40 A+	3,4	80	<19
1	40	LED Panel P1 TU 2x2 D 40W 840 21	93101671	93059577	4 400	4000	50k	20	110	80+	595x595x10	-10 to +40 A+	3,4	110	21
1	40	LED Panel P1 TU 2x2 D 40W 840 19	93101672	93059578	4 400	4000	50k	20	110	80+	595x595x10	-10 to +40 A+	3,4	80	<19
1	40	LED Panel P1 TU 2x2 D 40W 865 21	93108092	93071219	4 800	6500	50k	20	120	80+	595x595x10	-10 to +40 A+	3,4	110	21
1	40	LED Panel P1 TU 2x2 D 40W 862 19	93108093	93071220	4 800	6500	50k	20	120	80+	595x595x10	-10 to +40 A+	3,4	80	<19
2	40	LED Panel P1 TU 1x4 D 40W 830 21	93108080	93059579	4 200	3000	50k	20	105	80+	295x1195x10	-10 to +40 A+	3,3	110	21
2	40	LED Panel P1 TU 1x4 D 40W 830 19	93101674	93059580	4 000	3000	50k	20	100	80+	295x1195x10	-10 to +40 A+	3,3	80	<19
2	40	LED Panel P1 TU 1x4 D 40W 840 21	93108081	93059581	4 500	4000	50k	20	113	80+	295x1195x10	-10 to +40 A+	3,3	110	21
2	40	LED Panel P1 TU 1x4 D 40W 840 19	93108082	93059582	4 000	4000	50k	20	100	80+	295x1195x10	-10 to +40 A+	3,3	80	<19
2	40	LED Panel P1 TU 1x4 D 40W 865 21	93108094	93071221	4 200	6500	50k	20	105	80+	295x1195x10	-10 to +40 A+	3,3	110	21
2	40	LED Panel P1 TU 1x4 D 40W 865 19	93108095	93071222	4 200	6500	50k	20	105	80+	295x1195x10	-10 to +40 A+	3,3	80	<19

Edgelit Panel Eco G2 - Static driver

1	36	LED Panel S2 TU 2x2 S 36W 830 21 EU/2	93101347	93092691	3 300	3000	30k	20	92	80+	595x595x10	-10 to +40 A+	2,2	110	21
1	36	LED Panel S2 TU 2x2 S 36W 830 19 EU/2	93101350	93092689	3 300	3000	30k	20	92	80+	595x595x10	-10 to +40 A+	2,2	80	<19
1	36	LED Panel S2 TU 2x2 S 36W 840 21 EU/2	93101348	93090178	3 500	4000	30k	20	97	80+	595x595x10	-10 to +40 A+	2,2	110	21
1	36	LED Panel S2 TU 2x2 S 36W 840 19 EU/2	93101351	93090179	3 500	4000	30k	20	97	80+	595x595x10	-10 to +40 A+	2,2	80	<19
1	36	LED Panel S2 TU 2x2 S 36W 865 21 EU/2	93101349	93092692	3 500	6500	30k	20	97	80+	595x595x10	-10 to +40 A+	2,2	110	21
1	36	LED Panel S2 TU 2x2 S 36W 865 19 EU/2	93101352	93092690	3 400	6500	30k	20	94	80+	595x595x10	-10 to +40 A+	2,2	80	<19



Wattage (W)	Product Description	Tungram Product Code	GE Product Code	Lumen (lm)	CCT (K)	Rated life L70 (h)	IP	System Efficiency (lm/W)	CRI (Ra)	Dimensions (mm)	Ambient Temperature	EEC	Weight (kg)	Beam angle (°)	Model
-------------	---------------------	----------------------	-----------------	------------	---------	--------------------	----	--------------------------	----------	-----------------	---------------------	-----	-------------	----------------	-------

Edgelit Panel - Accessories

	Surface mounting KIT Edgelit 2x2 R9010	-	93082877												
	Surface mounting KIT Edgelit 2x2 R9003	93108104	93082876												
	Surface mounting KIT Edgelit 1x4 R9010	-	93082878												
	Surface mounting KIT 2x2 R9003	93104262													
	Surface mounting KIT Edgelit 1x4 R9003	93108108	93094144												
	Surface mounting KIT 1x4 R9003	93104264													
	SUSPENSION KIT 2X2 LED PANEL	93107527	93055969												
	SUSPENSION KIT 1X4 LED PANEL	93107541	93060875												
	Plasterboard Mount KIT for Edgelit	93107567	93082882												
	EMBM02-3-N (Emergency converter box)	-	93082880												

T5 Batten ECO - Static driver

4.5	LED Batten G1 TU IP20 4.5W 1ft 840 E	93107511	93044235	400	4000	30k	20	89	80+	311.5x	-20 to +40 A+	0.07	170	3
4.5	LED Batten G1 TU IP20 4.5W 1ft 830 E	93107994	93044476	350	3000	30k	20	78	80+	25.9x37.3	-20 to +40 A+	0.07	170	3
8	LED Batten G1 TU IP20 8W 2ft 840 E	93107512	93044477	800	4000	30k	20	100	80+	581.5	-20 to +40 A+	0.11	170	3
8	LED Batten G1 TU IP20 8W 2ft 830 E	93107995	93044478	750	3000	30k	20	94	80+	x25.9x37.3	-20 to +40 A+	0.11	170	3
12	LED Batten G1 TU IP20 12W 3ft 840 E	93107513	93044479	1 200	4000	30k	20	100	80+	881.5	-20 to +40 A+	0.16	170	3
12	LED Batten G1 TU IP20 12W 3ft 830 E	93108066	93044480	1 100	3000	30k	20	92	80+	x25.9x37.3	-20 to +40 A+	0.16	170	3
16	LED Batten G1 TU IP20 16W 4ft 840 E	93107514	93044481	1 550	4000	30k	20	97	80+	1181.5	-20 to +40 A+	0.21	170	3
16	LED Batten G1 TU IP20 16W 4ft 830 E	93108067	93044482	1 450	3000	30k	20	91	80+	x25.9x37.3	-20 to +40 A+	0.21	170	3

T5 Batten ECO - Accessories

	Power cord without plug(wire 500mm)	93107515	93044483												4
	Extend cable(wire 200mm)	93107516	93044484												5
	Power cable 1m with EU plug	93108089	93066758												
	Power cable 1m with UK plug		93066759												

T5 Batten Switch - Static driver

4.5	LED Batten G1 TU IP20 4.5W 1ft 840 S	93107521	93053138	400	4000	30k	20	89	80+	311.5x	-20 to 40 A+	0.07	170	6
4.5	LED Batten G1 TU IP20 4.5W 1ft 830 S	93108068	93053139	350	3000	30k	20	78	80+	25.9x37.3	-20 to 40 A+	0.07	170	6
8	LED Batten G1 TU IP20 8W 2ft 840 S	93107522	93053140	800	4000	30k	20	100	80+	581.5	-20 to 40 A+	0.11	170	6
8	LED Batten G1 TU IP20 8W 2ft 830 S	93108069	93053141	750	3000	30k	20	94	80+	x25.9x37.3	-20 to 40 A+	0.11	170	6
12	LED Batten G1 TU IP20 12W 3ft 840 S	93107523	93053142	1 200	4000	30k	20	100	80+	881.5	-20 to 40 A+	0.16	170	6
12	LED Batten G1 TU IP20 12W 3ft 830 S	93108070	93053143	1 100	3000	30k	20	92	80+	x25.9x37.3	-20 to 40 A+	0.16	170	6
16	LED Batten G1 TU IP20 16W 4ft 840 S	93107524	93053144	1 550	4000	30k	20	97	80+	1181.5	-20 to 40 A+	0.21	170	6
16	LED Batten G1 TU IP20 16W 4ft 830 S	93108071	93053145	1 450	3000	30k	20	91	80+	x25.9x37.3	-20 to 40 A+	0.21	170	6



LED Indoor Solutions / Indoor Fixtures

LED Indoor Solutions / Indoor Fixtures

Model	Wattage (W)	Product Description	Tungsrpm Product Code	GE Product Code	Lumen (lm)	CCT (K)	Rated life L70 (h)	IP	System Efficiency (lm/W)	CRI (Ra)	Dimensions (mm)	Ambient Temperature	EEC	Weight (kg)	Beam angle (°)
ECO Downlighter - Static driver															
1	11	DM6L2SP30/C G3	-	93053257	1 045	3000	45k	20	95	80+	ø195x120	0 to +40	A+	0.5	95±12
1	11	DM6L2SP40/C G3	-	93053258	1 100	4000	45k	20	100	80+	ø195x120	0 to +40	A+	0.5	95±12
1	11	DM6L2SP65/C G3	-	93053259	1 100	6500	45k	20	100	80+	ø195x120	0 to +40	A+	0.5	95±12
1	16	DM6L4SP30/C G3	-	93053260	1 520	3000	45k	20	95	80+	ø195x120	0 to +40	A+	0.55	95±12
1	16	DM6L4SP40/C G3	-	93053261	1 600	4000	45k	20	100	80+	ø195x120	0 to +40	A+	0.55	95±12
1	16	DM6L4SP65/C G3	-	93053262	1 600	6500	45k	20	100	80+	ø195x120	0 to +40	A+	0.55	95±12
1	16	DM8L1SP30/C G3	-	93053263	1 520	3000	45k	20	95	80+	ø247x133	0 to +40	A+	0.9	95±12
1	16	DM8L1SP40/C G3	-	93053264	1 600	4000	45k	20	100	80+	ø247x133	0 to +40	A+	0.9	95±12
1	16	DM8L1SP65/C G3	-	93053265	1 600	6500	45k	20	100	80+	ø247x133	0 to +40	A+	0.9	95±12
1	22	DM8L2SP30/C G3	-	93053266	2 090	3000	45k	20	95	80+	ø247x133	0 to +40	A+	0.95	95±12
1	22	DM8L2SP40/C G3	-	93053267	2 200	4000	45k	20	100	80+	ø247x133	0 to +40	A+	0.95	95±12
1	22	DM8L2SP65/C G3	-	93053268	2 200	6500	45k	20	100	80+	ø247x133	0 to +40	A+	0.95	95±12
Diffuser Downlight - Static driver															
2	11	LED DLR Diff P1 TU6 IP20 11W 830 SST	93108076	93057436	1 100	3000	45k	20	100	80+	ø180x81	-10 to +40	A+	0.32	100+/-15°
2	11	LED DLR Diff P1 TU6 IP20 11W 840 SST	93107533	93057437	1 100	4000	45k	20	100	80+	ø180x81	-10 to +40	A+	0.32	100+/-15°
2	11	DDTW6-1165-7SB-STC	-	93057438	1 100	6500	45k	20	100	80+	ø180x81	-10 to +40	A+	0.32	100+/-15°
2	15	LED DLR Diff P1 TU6 IP20 15W 830 SST	93108077	93057439	1 500	3000	45k	20	100	80+	ø180x81	-10 to +40	A+	0.32	100+/-15°
2	15	LED DLR Diff P1 TU6 IP20 15W 840 SST	93107534	93057440	1 500	4000	45k	20	100	80+	ø180x81	-10 to +40	A+	0.32	100+/-15°
2	15	DDTW6-1565-7SB-STC	-	93057441	1 500	6500	45k	20	100	80+	ø180x81	-10 to +40	A+	0.32	100+/-15°
2	15	LED DLR Diff P1 TU8 IP20 15W 830 SST	93108078	93057442	1 500	3000	45k	20	100	80+	ø240x93	-10 to +40	A+	0.48	100+/-15°
2	15	LED DLR Diff P1 TU8 IP20 15W 840 SST	93107535	93057443	1 500	4000	45k	20	100	80+	ø240x93	-10 to +40	A+	0.48	100+/-15°
2	15	DDTW8-1565-7SB-STC	-	93057444	1 500	6500	45k	20	100	80+	ø240x93	-10 to +40	A+	0.48	100+/-15°
2	22	LED DLR Diff P1 TU8 IP20 22W 830 SST	93108079	93057445	2 200	3000	45k	20	100	80+	ø240x93	-10 to +40	A+	0.5	100+/-15°
2	22	LED DLR Diff P1 TU8 IP20 22W 840 SST	93107536	93057446	2 200	4000	45k	20	100	80+	ø240x93	-10 to +40	A+	0.5	100+/-15°
2	22	DDTW8-2265-7SB-STC	-	93057447	2 200	6500	45k	20	100	80+	ø240x93	-10 to +40	A+	0.5	100+/-15°
		DDTW6 D210 accessory ring	93108084	93064214											



1 2

Model	Wattage (W)	Product Description	Tungsrpm Product Code	GE Product Code	Lumen (lm)	CCT (K)	Rated life L70 (h)	IP	System Efficiency (lm/W)	CRI (Ra)	Dimensions (mm)	Ambient Temperature	EEC	Weight (kg)	Beam angle (°)
Slim Downlight - Static driver															
3	12	LED DLR SLIM P1 TU6 IP40 12W 830 SST	93108085	93064747	1 080	3000	45k	40	90	80+	ø180x36	-10 to +40	A+	0.31	110+/-12°
3	12	LED DLR SLIM P1 TU6 IP40 12W 840 SST	93108086	93064748	1 080	4000	45k	40	90	80+	ø180x36	-10 to +40	A+	0.31	110+/-12°
3	12	DSTW6-1265-7SR-ST	-	93064749	1 080	6500	45k	40	90	80+	ø180x36	-10 to +40	A+	0.31	110+/-12°
3	18	LED DLR SLIM P1 TU8 IP40 18W 830 SST	93108087	93064753	1 530	3000	45k	40	85	80+	ø240x36	-10 to +40	A+	0.52	110+/-12°
3	18	LED DLR SLIM P1 TU8 IP40 18W 840 SST	93108088	93064754	1 620	4000	45k	40	90	80+	ø240x36	-10 to +40	A+	0.52	110+/-12°
3	18	DSTW8-1865-7SR-ST	-	93064755	1 620	6500	45k	40	90	80+	ø240x36	-10 to +40	A+	0.52	110+/-12°
3	22	LED DLR SLIM P1 TU8 IP40 22W 830 SST	93108090	93068480	2 000	3000	45k	40	91	80+	ø240x36	-10 to +40	A+	0.52	110+/-12°
3	22	LED DLR SLIM P1 TU8 IP40 22W 840 SST	93108091	93068481	2 000	4000	45k	40	91	80+	ø240x36	-10 to +40	A+	0.52	110+/-12°
3	22	DSTW8-2265-7SR-ST	-	93068482	2 000	6500	45k	40	91	80+	ø240x36	-10 to +40	A+	0.52	110+/-12°
Slim Downlight - DALI driver															
3	12	LED DLR SLIM P1 TU6 IP40 12W 830 DST	93108096	93071362	1 080	3000	45k	40/20	90	80+	ø180x43	-10 to +40	A+	0.44	110+/-12°
3	12	LED DLR SLIM P1 TU6 IP40 12W 840 DST	93108097	93071363	1 080	4000	45k	40/20	90	80+	ø180x43	-10 to +40	A+	0.44	110+/-12°
3	12	DSTW6-1265-7DR-ST	-	93071364	1 080	6500	45k	40/20	90	80+	ø180x43	-10 to +40	A+	0.44	110+/-12°
3	22	LED DLR SLIM P1 TU8 IP40 22W 830 DST	93108098	93071365	2 000	3000	45k	40/20	91	80+	ø240x43	-10 to +40	A+	0.63	110+/-12°
3	22	LED DLR SLIM P1 TU8 IP40 22W 840 DST	93108099	93071396	2 000	4000	45k	40/20	91	80+	ø240x43	-10 to +40	A+	0.63	110+/-12°
3	22	DSTW8-2265-7DR-ST	-	93071397	2 000	6500	45k	40/20	91	80+	ø240x43	-10 to +40	A+	0.63	110+/-12°
Recessed Spotlight G2 - Static driver															
4	6	RSTA-D7-627-7SR-40	-	93082119	480	2700	30k	20	90	80+	ø88x34.5	-10 to +40	A+	0.17	40
4	6	LED Spotlight G1 TU WRA IP20 7W 830 S	93107544	93066765	550	3000	30k	20	90	80+	ø88x34.5	-10 to +40	A+	0.17	40
4	6	LED Spotlight G1 TU WRA IP20 7W 840 S	93107545	93066766	550	4000	30k	20	90	80+	ø88x34.5	-10 to +40	A+	0.17	40
4	6	LED Spotlight G1 TU WRA IP20 7W 865 S	93107546	93066767	550	6500	30k	20	90	80+	ø88x34.5	-10 to +40	A+	0.17	40
Recessed Spotlight - Static driver															
5	5	LED Spotlight G1 TU WRA IP20 5W 830 S	93100364	-	380	3000	20k	20	76	80+	ø85x54	-10 to +40	A+	0.117	36
5	5	LED Spotlight G1 TU WRA IP20 5W 840 S	93100526	-	420	4000	20k	20	84	80+	ø85x54	-10 to +40	A+	0.117	36
5	5	LED Spotlight G1 TU WRF IP65 5W 830 S	93100528	-	380	3000	20k	65	76	80+	ø85x54	-10 to +40	A+	0.110	36
5	5	LED Spotlight G1 TU WRF IP65 5W 840 S	93100530	-	420	4000	20k	65	84	80+	ø85x54	-10 to +40	A+	0.110	36
5	5	LED Spotlight G1 TU WSA IP20 5W 830 S	93100532	-	380	3000	20k	20	76	80+	85x85x54	-10 to +40	A+	0.126	36
5	5	LED Spotlight G1 TU WSA IP20 5W 840 S	93100534	-	420	4000	20k	20	84	80+	85x85x54	-10 to +40	A+	0.126	36
5	5	LED Spotlight G1 TU WSF IP65 5W 830 S	93100536	-	380	3000	20k	65	76	80+	85x85x54	-10 to +40	A+	0.118	36
5	5	LED Spotlight G1 TU WSF IP65 5W 840 S	93100538	-	420	4000	20k	65	84	80+	85x85x54	-10 to +40	A+	0.118	36
Recessed Spotlight G2 - Triac driver															
5	5	LED Spotlight G1 TU WRA IP20 5W 830 T	93100365	-	380	3000	20k	20	76	80+	ø85x54	-10 to +40	A+	0.117	36
5	5	LED Spotlight G1 TU WRA IP20 5W 840 T	93100527	-	420	4000	20k	20	84	80+	ø85x54	-10 to +40	A+	0.117	36
5	5	LED Spotlight G1 TU WRF IP65 5W 830 T	93100529	-	380	3000	20k	65	76	80+	ø85x54	-10 to +40	A+	0.110	36
5	5	LED Spotlight G1 TU WRF IP65 5W 840 T	93100531	-	420	4000	20k	65	84	80+	ø85x54	-10 to +40	A+	0.110	36
5	5	LED Spotlight G1 TU WSA IP20 5W 830 T	93100533	-	380	3000	20k	20	76	80+	85x85x54	-10 to +40	A+	0.126	36
5	5	LED Spotlight G1 TU WSA IP20 5W 840 T	93100535	-	420	4000	20k	20	84	80+	85x85x54	-10 to +40	A+	0.126	36
5	5	LED Spotlight G1 TU WSF IP65 5W 830 T	93100537	-	380	3000	20k	65	76	80+	85x85x54	-10 to +40	A+	0.118	36
5	5	LED Spotlight G1 TU WSF IP65 5W 840 T	93100539	-	420	4000	20k	65	84	80+	85x85x54	-10 to +40	A+	0.118	36



3 4 5

LED Indoor Solutions / Indoor Fixtures

LED Indoor Solutions / Indoor Fixtures

Model	Wattage (W)	Product Description	Tungsrn Product Code	GE Product Code	Lumen (lm)	CCT (K)	Rated life L70 (h)	IP	System Efficiency (lm/W)	CRI (Ra)	Dimensions (mm)	Ambient Temperature	EEC	Weight (kg)	Beam angle (°)	Additional feature
-------	-------------	---------------------	----------------------	-----------------	------------	---------	--------------------	----	--------------------------	----------	-----------------	---------------------	-----	-------------	----------------	--------------------

2D Bulkhead - Static driver

1	6.5	BH 2DC- D27-6,5/35-7S-ST	-	93055623	800	3500	40k	54	123	80+	ø268 x 98	-10 to +25	A++	0.668	-	-
1	6.5	BH 2DC- D27-6,5/40-7S-ST	-	93055624	830	4000	40k	54	128	80+	ø268 x 98	-10 to +25	A++	0.668	-	-
1	12.5	BH 2DC- D36-12,5/35-7S-ST	-	93055625	1500	3500	40k	54	120	80+	ø363 x 115	-10 to +25	A++	1.154	-	-
1	12.5	BH 2DC- D36-12,5/40-7S-ST	-	93056106	1550	4000	40k	54	124	80+	ø363 x 115	-10 to +25	A++	1.154	-	-
1	6.5	BH 2DO- D27-6,5/35-7S-ST	-	93057382	700	3500	40k	54	108	80+	ø268 x 98	-10 to +25	A++	0.661	-	-
1	6.5	BH 2DO- D27-6,5/40-7S-ST	-	93057383	720	4000	40k	54	111	80+	ø268 x 98	-10 to +25	A++	0.661	-	-
1	12.5	BH 2DO- D36-12,5/35-7S-ST	-	93057384	1300	3500	40k	54	104	80+	ø363 x 115	-10 to +25	A++	1.146	-	-
1	12.5	BH 2DO- D36-12,5/40-7S-ST	-	93057385	1400	4000	40k	54	112	80+	ø363 x 115	-10 to +25	A++	1.146	-	-

Integrated Bulkhead - Static driver

2	9	LED Bulkhead G1 TU D25 9W 830 S NNN	93107549	93072705	855	3000	45k	65	95	80+	ø250 x 102	-30 to +40	A+	0.69	125	
2	9	LED Bulkhead G1 TU D25 9W 840 S NNN	93107551	93073527	855	4000	45k	65	95	80+	ø250 x 102	-30 to +40	A+	0.69	125	
2	17	LED Bulkhead G1 TU D25 17W 830 S NNN	93107553	93073531	1600	3000	45k	65	94	80+	ø250 x 102	-30 to +40	A+	0.7	125	
2	17	LED Bulkhead G1 TU D25 17W 840 S NNN	93107555	93073533	1600	4000	45k	65	94	80+	ø250 x 102	-30 to +40	A+	0.7	125	
2	25	LED Bulkhead G1 TU D30 25W 830 S NNN	93107557	93073543	2400	3000	45k	65	96	80+	ø300 x 109	-30 to +40	A+	1	125	
2	25	LED Bulkhead G1 TU D30 25W 840 S NNN	93107558	93073544	2400	4000	45k	65	96	80+	ø300 x 109	-30 to +40	A+	1	125	
2	9	LED Bulkhead G1 TU D25 9W 830 S NNM	93107550	93073526	855	3000	45k	65	95	80+	ø250 x 102	-30 to +40	A+	0.74	125	Motion and daylight sensor
2	9	LED Bulkhead G1 TU D25 9W 840 S NNM	93107552	93073528	855	4000	45k	65	95	80+	ø250 x 102	-30 to +40	A+	0.74	125	Motion and daylight sensor
2	17	LED Bulkhead G1 TU D25 17W 830 S NNM	93107554	93073532	1600	3000	45k	65	94	80+	ø250 x 102	-30 to +40	A+	0.75	125	Motion and daylight sensor
2	17	LED Bulkhead G1 TU D25 17W 840 S NNM	93107556	93073534	1600	4000	45k	65	94	80+	ø250 x 102	-30 to +45	A+	0.75	125	Motion and daylight sensor
2	25	LED Bulkhead G1 TU D30 25W 830 S NNM	93107559	93073546	2400	3000	45k	65	96	80+	ø300 x 109	-30 to +45	A+	1.05	125	Motion and daylight sensor
2	25	LED Bulkhead G1 TU D30 25W 840 S NNM	93107560	93073547	2400	4000	45k	65	96	80+	ø300 x 109	-30 to +45	A+	1.05	125	Motion and daylight sensor
2	24	LED Bulkhead G1 TU D30 24W 830 S EMN	93108100	93073537	2150	3000	45k	65	90	80+	ø300 x 109	-30 to +25	A+	1.2	125	Motion and daylight sensor + 3hrs EM
2	24	LED Bulkhead G1 TU D30 24W 840 S EMN	93108101	93073538	2150	4000	45k	65	90	80+	ø300 x 109	-30 to +25	A+	1.2	125	Motion and daylight sensor + 3hrs EM
2	24	LED Bulkhead G1 TU D30 24W 830 S EMM	93108102	93073540	2150	3000	45k	65	90	80+	ø300 x 109	-30 to +25	A+	1.25	125	Motion and daylight sensor + 3hrs EM
2	24	LED Bulkhead G1 TU D30 24W 840 S EMM	93108103	93073541	2150	4000	45k	65	90	80+	ø300 x 109	-30 to +25	A+	1.25	125	Motion and daylight sensor + 3hrs EM

Integrated Bulkhead - Static driver

2	17	LED Bulkhead G1 TU D33 17W 840 S NNN	93100222	-	1800	4000	45k	65	106	80+	ø330x109	-30 to +40	A+	1.03	125	
2	9	LED Bulkhead G1 TU D33 9W 840 S NNN	93100223	-	950	4000	45k	65	106	80+	ø330x109	-30 to +40	A+	1.03	125	
2	17	LED Bulkhead G1 TU D33 17W 840 S NNM	93100224	-	1800	4000	45k	65	106	80+	ø330x109	-30 to +40	A+	1.08	125	
2	9	LED Bulkhead G1 TU D33 9W 840 S NNM	93100225	-	950	4000	45k	65	106	80+	ø330x109	-30 to +40	A+	1.08	125	
2	19	LED Bulkhead G1 TU D33 19W 840 S EMN	93102253	-	1800	4000	45k	65	95	80+	ø330x109	5 to 25	A+	1.2	125	
2	11	LED Bulkhead G1 TU D33 11W 840 S EMN	93102254	-	950	4000	45k	65	86	80+	ø330x109	5 to 25	A+	1.2	125	
2	20	LED Bulkhead G1 TU D33 20W 840 S EMM	93102255	-	1800	4000	45k	65	90	80+	ø330x109	5 to 25	A+	1.25	125	
2	12	LED Bulkhead G1 TU D33 12W 840 S EMM	93102256	-	950	4000	45k	65	79	80+	ø330x109	5 to 25	A+	1.25	125	



1 2

Wattage (W)	Product Description	Tungsrn Product Code	GE Product Code	Lumen (lm)	CCT (K)	Rated life L70 (h)	IP	System Efficiency (lm/W)	CRI (Ra)	Dimensions (mm)	Ambient Temperature	EEC	Weight (kg)	Beam angle (°)	Model
-------------	---------------------	----------------------	-----------------	------------	---------	--------------------	----	--------------------------	----------	-----------------	---------------------	-----	-------------	----------------	-------

Waterproof Mariner Integrated Premium - Static driver

20	LED Mariner PR G1 TU 4' 20W 840 SST	93101662	93055991	2500	4000	50k	65	125	80+	66x1170x63	-20 to +40	A+	0.87	125	3
20	LED Mariner PR G1 TU 4' 20W 865 SST	93107528	93055993	2500	6500	50k	65	125	80+	66x1170x63	-20 to +40	A+	0.87	125	3
30	LED Mariner PR G1 TU 4' 30W 840 SST	93101663	93055995	3800	4000	50k	65	127	80+	66x1170x63	-20 to +40	A+	0.87	125	3
30	LED Mariner PR G1 TU 4' 30W 865 SST	93107529	93055997	3800	6500	50k	65	127	80+	66x1170x63	-20 to +40	A+	0.87	125	3
30	LED Mariner PR G1 TU 5' 30W 840 SST	93107530	93055999	3650	4000	50k	65	122	80+	66x1470x63	-20 to +40	A+	1.07	125	3
30	LED Mariner PR G1 TU 5' 30W 865 SST	93107531	93056001	3650	6500	50k	65	122	80+	66x1470x63	-20 to +40	A+	1.07	125	3
49	LED Mariner PR G1 TU 5' 49W 840 SST	93101668	93056003	6200	4000	50k	65	127	80+	66x1470x63	-20 to +40	A+	1.12	125	3
49	LED Mariner PR G1 TU 5' 49W 865 SST	93107532	93056005	6200	6500	50k	65	127	80+	66x1470x63	-20 to +40	A+	1.12	125	3
70	LED Mariner PR G1 TU 5' 70W 840 SST	93101687	93090173	9000	4000	50k	65	129	80+	66x1470x63	-20 to +40	A+	1.12	125	3
70	LED Mariner PR G1 TU 5' 70W 865 SST	93107568	93090174	9000	6500	50k	65	129	80+	66x1470x63	-20 to +40	A+	1.12	125	3

Waterproof Mariner Integrated Premium - DALI driver

30	LED Mariner PR G1 TU 4' 30W 840 DST	93101691	-	3800	4000	50k	65	127	80+	66x1170x63	-20 to +40	A+	0.87	125	3
49	LED Mariner PR G1 TU 5' 49W 840 DST	93101696	-	6200	4000	50k	65	127	80+	66x1470x63	-20 to +40	A+	1.12	125	3

Waterproof Mariner Integrated Premium - Motion Sensor - Static driver

21	LED Mariner PR G1 TU 4' 21W 840 SMS	93101688	93090283	2500	4000	50k	65	119	80+	66x1170x63	-20 to +40	A+	0.87	125	3
21	LED Mariner PR G1 TU 4' 21W 865 SMS	93107570	93092663	2500	6500	50k	65	119	80+	66x1170x63	-20 to +40	A+	0.87	125	3
31	LED Mariner PR G1 TU 4' 31W 840 SMS	93101689	93090284	3800	4000	50k	65	123	80+	66x1170x63	-20 to +40	A+	0.87	125	3
31	LED Mariner PR G1 TU 4' 31W 865 SMS	93107571	93092664	3800	6500	50k	65	123	80+	66x1170x63	-20 to +40	A+	0.87	125	3
31	LED Mariner PR G1 TU 5' 31W 840 SMS	93107569	93090285	3650	4000	50k	65	118	80+	66x1470x63	-20 to +40	A+	1.07	125	3
31	LED Mariner PR G1 TU 5' 31W 865 SMS	93107572	93092665	3650	6500	50k	65	118	80+	66x1470x63	-20 to +40	A+	1.07	125	3
49	LED Mariner PR G1 TU 5' 49W 840 SMS	93101690	93090316	6200	4000	50k	65	127	80+	66x1470x63	-20 to +40	A+	1.12	125	3
49	LED Mariner PR G1 TU 5' 49W 865 SMS	93107573	93092676	6200	6500	50k	65	127	80+	66x1470x63	-20 to +40	A+	1.12	125	3
70	LED Mariner PR G1 TU 5' 70W 840 SMS	93101697	93092678	9000	4000	50k	65	129	80+	66x1470x63	-20 to +40	A+	1.12	125	3
70	LED Mariner PR G1 TU 5' 70W 865 SMS	93107574	93092677	9000	6500	50k	65	129	80+	66x1470x63	-20 to +40	A+	1.12	125	3

Waterproof Mariner Integrated Premium - Emergency - Static driver

23	MPY4F-2340-7SB-EMLT	-	93055992	2500	4000	50k	65	109	80+	66x1197x63	-20 to +25	A+	1.35	125	3
23	MPY4F-2365-7SB-EMLT	-	93055994	2500	6500	50k	65	109	80+	66x1197x63	-20 to +25	A+	1.35	125	3
34	LED Mariner PR G1 TU 4' 34W 840 SEM	93108072	93055996	3800	4000	50k	65	112	80+	66x1197x63	-20 to +25	A+	1.35	125	3
34	LED Mariner PR G1 TU 4' 34W 865 SEM	93108073	93055998	3800	6500	50k	65	112	80+	66x1497x63	-20 to +25	A+	1.57	125	3
33	MPY5F-3340-7SB-EMLT	-	93056000	3650	4000	50k	65	111	80+	66x1497x63	-20 to +25	A+	1.57	125	3
33	MPY5F-3365-7SB-EMLT	-	93056002	3650	6500	50k	65	111	80+	66x1497x63	-20 to +25	A+	1.60	125	3
52	LED Mariner PR G1 TU 5' 52W 840 SEM	93108074	93056004	6200	4000	50k	65	119	80+	66x1497x63	-20 to +25	A+	1.60	125	3
52	LED Mariner PR G1 TU 5' 52W 865 SEM	93108075	93056006	6200	6500	50k	65	119	80+	66x1497x63	-20 to +25	A+	1.60	125	3

Waterproof Mariner - Integrated Accessory

Metal clips for Integrated Mariner	93094134	-													4
Mariner Suspension Kit	93093387	-													5



3 4 5

LED Indoor Solutions / Indoor Fixtures

LED Indoor Solutions / Indoor Fixtures

Model	Wattage (W)	Product Description	Tungram Product Code	GE Product Code	Lumen (lm)	CCT (K)	Rated life L70 (h)	IP	System Efficiency (lm/W)	CRI (Ra)	Dimensions (mm)	Ambient Temperature	EEC	Weight (kg)	Beam angle (°)
Waterproof Mariner - Integrated Start - Static driver															
1	12	LED MARINER ST G1 TU 2' 12W 840 S EU	93096947	93092699	1 200	4000	30k	65	100	80+	72x600x58	-20 to +25	A+	0.70	120
1	12	LED MARINER ST G1 TU 2' 12W 865 S EU	93096949	93092700	1 200	6500	30k	65	100	80+	72x600x58	-20 to +25	A+	0.70	120
1	24	LED MARINER ST G1 TU 2' 24W 840 S EU	93096950	93090163	2 400	4000	30k	65	100	80+	92x600x60	-20 to +25	A+	0.80	120
1	24	LED MARINER ST G1 TU 2' 24W 865 S EU	93096952	93090164	2 400	6500	30k	65	100	80+	92x600x60	-20 to +25	A+	0.80	120
1	24	LED MARINER ST G1 TU 4' 24W 840 S EU	93096955	93092701	2 400	4000	30k	65	100	80+	72x1200x58	-20 to +25	A+	1.30	120
1	24	LED MARINER ST G1 TU 4' 24W 865 S EU	93096957	93092702	2 400	6500	30k	65	100	80+	72x1200x58	-20 to +25	A+	1.30	120
1	48	LED MARINER ST G1 TU 5' 28W 840 S EU	93096959	93088134	4 800	4000	30k	65	100	80+	92x1200x60	-20 to +25	A+	1.70	120
1	48	LED MARINER ST G1 TU 5' 28W 865 S EU	93096961	93089020	4 800	6500	30k	65	100	80+	92x1200x60	-20 to +25	A+	1.70	120
1	28	LED MARINER ST G1 TU 4' 48W 840 S EU	93096962	93092703	2 800	4000	30k	65	100	80+	72x1500x58	-20 to +25	A+	1.70	120
1	28	LED MARINER ST G1 TU 4' 48W 865 S EU	93096965	93092704	2 800	6500	30k	65	100	80+	72x1500x58	-20 to +25	A+	1.70	120
1	56	LED MARINER ST G1 TU 5' 56W 840 S EU	93096968	93089017	5 600	4000	30k	65	100	80+	92x1500x60	-20 to +25	A+	2.00	120
1	56	LED MARINER ST G1 TU 5' 56W 865 S EU	93096971	93089023	5 600	6500	30k	65	100	80+	92x1500x60	-20 to +25	A+	2.00	120

Waterproof Mariner - Empty Body															
2	max 18W	LED MARINER BODY TU T8 SINGLE 1200MM	93107517	93052188				65			1270x65x70				
2	max 2x18W	LED MARINER BODY TU T8 TWIN 1200MM	93107518	93052189				65			1270x102x70				
2	max 27W	LED MARINER BODY TU T8 SINGLE 1500MM	93107519	93052190				65			1570x65x70				
2	max 2x27W	LED MARINER BODY TU T8 TWIN 1500MM	93107520	93052191				65			1570x102x70				

Floodlight Symmetrical - Static driver															
3	20	LED Flood G1 TU S 20W 840 SY ST BN	93101677	93081605	2 000	4000	30k	65	100	80+	163x36x163	-20 to +40	A+	0,62	100 w/o reflector
3	20	LED Flood G1 TU S 20W 865 SY ST BN	93107561	93082101	2 000	6500	30k	65	100	80+	163x36x163	-20 to +40	A+	0,62	
3	30	LED Flood G1 TU S 30W 840 SY ST BN	93101678	93082096	3 000	4000	30k	65	100	80+	203x36x202	-20 to +40	A+	0,97	
3	30	LED Flood G1 TU S 30W 865 SY ST BN	93107562	93082102	3 000	6500	30k	65	100	80+	203x36x202	-20 to +40	A+	0,97	
4	50	LED Flood G1 TU S 50W 840 SY ST BN	93101679	93082097	6 000	4000	30k	65	120	80+	223x36x216	-20 to +40	A+	1,14	120 w/o reflector
4	50	LED Flood G1 TU S 50W 865 SY ST BN	93107563	93082103	6 000	6500	30k	65	120	80+	223x36x216	-20 to +40	A+	1,14	
4	75	LED Flood G1 TU S 75W 840 SY ST BN	93101680	93082098	10 000	4000	50k	66	133	80+	286x91x368	-30 to +50	A+	3,29	45x85 asym.
4	75	LED Flood G1 TU S 75W 865 SY ST BN	93107564	93082104	10 000	6500	50k	66	133	80+	286x91x368	-30 to +50	A+	3,29	
4	115	LED Flood G1 TU S 115W 840 SY ST BN	93101681	93082099	15 000	4000	50k	66	130	80+	337x91x419	-30 to +50	A+	4,20	
4	115	LED Flood G1 TU S 115W 865 SY ST BN	93107565	93082105	15 000	6500	50k	66	130	80+	337x91x419	-30 to +50	A+	4,20	
4	150	LED Flood G1 TU S 150W 840 SY ST BN	93101683	93082100	20 000	4000	50k	66	133	80+	373x91x450	-30 to +50	A+	5,33	
4	150	LED Flood G1 TU S 150W 865 SY ST BN	93107566	93082106	20 000	6500	50k	66	133	80+	373x91x450	-30 to +50	A+	5,33	

Floodlight Asymmetrical - Static driver															
4	115	LED Flood G1 TU S 115W 840 AS ST BN	93101682	-	14 375	4000	50k	66	125	80+	373x91x450	-30 to +50	A+	5,33	45x85 asym.
4	150	LED Flood G1 TU S 150W 840 AS ST BN	93101684	-	18 000	4000	50k	66	120	80+	373x91x450	-30 to +50	A+	5,33	



1 2 3 4

Wattage (W)	Product Description	Tungram Product Code	GE Product Code	Lumen (lm)	CCT (K)	Rated life L70 (h)	IP	System Efficiency (lm/W)	CRI (Ra)	Dimensions (mm)	Ambient Temperature	EEC	Weight (kg)	Beam angle (°)	Model
Floodlight Symmetrical with Sensor - Static driver															
20	LED Flood G1 TU S 20W 840 SY ST BM	93107575	93094146	2 000	4000	30k	65	100	80+	263x36x163	-20 to +40	A+	0,62	100 w/o reflector	5
20	LED Flood G1 TU S 20W 865 SY ST BM	93107576	93094147	2 000	6500	30k	65	100	80+	263x36x163	-20 to +40	A+	0,62		5
30	LED Flood G1 TU S 30W 840 SY ST BM	93107577	93094148	3 000	4000	30k	65	100	80+	303x36x202	-20 to +40	A+	0,97		6
30	LED Flood G1 TU S 30W 865 SY ST BM	93107578	93094149	3 000	6500	30k	65	100	80+	303x36x202	-20 to +40	A+	0,97		6
50	LED Flood G1 TU S 50W 840 SY ST BM	93107579	93094150	6 000	4000	30k	65	120	80+	323x36x216	-20 to +40	A+	1,14		6
50	LED Flood G1 TU S 50W 865 SY ST BM	93107580	93094151	6 000	6500	30k	65	120	80+	323x36x216	-20 to +40	A+	1,14		6

Product Description	Tungram Product Code	GE Product Code	Wattage (W/m)	Lumen (lm/m)	CCT (K)	Pack Qty	Model
LED Soft Strip - for Indoor usage							
LSS04-24-27-60 TU	93088751	93011531	4,8	370	2700	10x5m rolls per box	7
LSS04-24-40-60 TU	93088752	93011532	4,8	470	4000	10x5m rolls per box	7
LSS04-24-57-60 TU	93088753	93011533	4,8	470	5700	10x5m rolls per box	7
LSS10-24-27-60 TU	93088754	93011535	10	750	2700	10x5m rolls per box	7
LSS10-24-40-60 TU	93088755	93011536	10	850	4000	10x5m rolls per box	7
LSS10-24-57-60 TU	93088926	93011537	10	900	5700	10x5m rolls per box	7

LED Soft Strip - for Outdoor usage							
LSS04-24-27-60-IP65 TU	93088928	93011539	4,8	320	2700	10x5m rolls per box	7
LSS10-24-27-60-IP65 TU	93088927	93011541	10	700	2700	10x5m rolls per box	7
LSS04-24-57-60-IP65 TU	93088929	93011538	4,8	400	5700	10x5m rolls per box	7
LSS10-24-57-60-IP65 TU	93088930	93011540	10	800	5700	10x5m rolls per box	7
LSS Connector strip to driver	93011732	93011732	-	-	-	200	7
LSS Connector strip to strip	93011731	93011731	-	-	-	400	7

Product Description	Tungram Product Code	GE Product Code	Wattage (W)	Model
LED Soft Strip Drivers				
LED25CV24EP	-	97547	25	8
LED25CV24EPS	-	97546	25	8
LED60CV24EP	-	97507	60	8
LED60CV24EPS	-	97506	60	8
LED100CV24EMS	-	97393	100	8
LED150CV24EMS	-	97759	150	8
LED200CV24EMS	-	97745	200	8



5 6 7 8

LED Indoor Solutions / Indoor Fixtures

Model	Wattage (W)	Product Description	Tungsram Product Code	GE Product Code	Lumen (lm)	CCT (K)	Rated life L70 (h)	IP	System Efficiency (lm/W)	CRI (Ra)	Dimensions (mm)	Ambient Temperature	EEC	Weight (kg)	Beam angle (°)
LED Round High Bay IP65 0-10V															
1	75	High Bay TU Gen1 75W 4000K 2A 110°	93103286	-	10 125	4000	50k	65	135	80+	ø300x213	-20 to +50	A++	2.43	110
1	75	High Bay TU Gen1 75W 6500K 2A 110°	93103287	-	10 125	6500	50k	65	135	80+	ø300x213	-20 to +50	A++	2.43	110
1	110	High Bay TU Gen1 110W 4000K 2A 110°	93101700	-	15 525	4000	50k	65	135	80+	ø300x213	-20 to +50	A++	2.43	110
1	110	High Bay TU Gen1 110W 6500K 2A 110°	93103288	-	15 525	6500	50k	65	135	80+	ø300x213	-20 to +50	A++	2.43	110
1	150	High Bay TU Gen1 150W 4000K 2A 110°	93101701	-	20 250	4000	50k	65	135	80+	ø302x213	-20 to +50	A++	2.50	110
1	150	High Bay TU Gen1 150W 6500K 2A 110°	93103289	-	20 250	6500	50k	65	135	80+	ø302x213	-20 to +50	A++	2.50	110
1	200	High Bay TU Gen1 200W 4000K 2A 110°	93101703	-	27 000	4000	50k	65	135	80+	ø360x207	-20 to +50	A++	3.04	110
1	200	High Bay TU Gen1 200W 6500K 2A 110°	93103290	-	27 000	6500	50k	65	135	80+	ø360x207	-20 to +50	A++	3.04	110
LED Round High Bay IP65 Dali															
1	150	High Bay TU Gen1 150W 4000K 2D 110°	93101702	-	20 250	4000	50k	65	135	80+	ø302x213	-20 to +50	A++	2.50	110
1	200	High Bay TU Gen1 200W 4000K 2D 110°	93101704	-	27 000	4000	50k	65	135	80+	ø360x207	-20 to +50	A++	3.04	110
LED Round High Bay IP65 Accessories															
-	30	High Bay Chain	93105658	-											
-	30	High Bay Reflector 90°	93105659	-											
-	50	High Bay Reflector 70°	93105660	-											
-	50	High Bay Surface mount Kit	93105661	-											
LED Emergency Downlight Recessed															
2	3	Emergency Downlight G1 TU 3 NL O Li N	93100226	-	110	6000	-	20	-	-	ø60x83	+5 to +50	-	0.185	100
2	3	Emergency Downlight G1 TU 3 NL C Li N	93100227	-	110	6000	-	20	-	-	ø60x83	+5 to +50	-	0.185	110
2	3	Emergency Downlight G1 TU 3 HL O Li N	93100228	-	165	6000	-	20	-	-	ø60x83	+5 to +50	-	0.233	100
2	3	Emergency Downlight G1 TU 3 HL C Li N	93100229	-	165	6000	-	20	-	-	ø60x83	+5 to +50	-	0.233	110
2	3	Emergency Downlight G1 TU 3 HL O Li S	93100230	-	165	6000	-	20	-	-	ø60x83	+5 to +50	-	0.233	100
2	3	Emergency Downlight G1 TU 3 HL C Li S	93100231	-	165	6000	-	20	-	-	ø60x83	+5 to +50	-	0.233	110
2	3	Emergency Downlight G1 TU 3 HL O Li D	93100232	-	165	6000	-	20	-	-	ø60x83	+5 to +50	-	0.233	100
2	3	Emergency Downlight G1 TU 3 HL C Li D	93100233	-	165	6000	-	20	-	-	ø60x83	+5 to +50	-	0.233	110
LED Emergency Converter Kit															
3	3	Emergency Kit G1 TU 3 Li N	93100237	-	-	6000	-	20	-	-	292x81x41	+5 to +35	-	0.415	-
3	3	Emergency Kit G1 TU 3 Li S	93100238	-	-	6000	-	20	-	-	292x81x41	+5 to +35	-	0.415	-
3	3	Emergency Kit G1 TU 3 Li D	93100239	-	-	6000	-	20	-	-	292x81x41	+5 to +35	-	0.415	-



1



2



3



LED Indoor Solutions / Industrial Fixtures

LED Indoor Solutions / Industrial Fixtures

Wattage (W)	Product Description	Tungstrom Product Code	GE Product Code	Lumen (lm)	CCT (K)	Controls	Rated life L70 (h)	IP	System Efficiency (lm/W)	CRI (Ra)	Dimensions (mm)	Ambient Temperature	EEC	Weight (kg)	Beam angle (°)	Diffuser Type
High bay IP66 - Dali/1-10V driver																
95	HB1P662471VNSTCE	TBD	-	12 900	4000	1-10V driver	61k	66	136	70	350x143x350	-30 to +55	A+	8,40	120	Clear
95	HB1P662475VNSTCE	TBD	-	12 100	4000	1-10V driver	61k	66	127	70	350x143x350	-30 to +55	A+	8,40	55	Clear
95	HB1P662479VNSTCE	TBD	-	12 600	4000	1-10V driver	61k	66	133	70	350x143x350	-30 to +55	A+	8,40	90	Clear
95	HB1P662481VNSTCE	93069183	-	11 800	4000	1-10V driver	61k	66	124	80	350x143x350	-30 to +55	A+	8,40	120	Clear
95	HB1P662485VNSTCE	TBD	-	11 000	4000	1-10V driver	61k	66	116	80	350x143x350	-30 to +55	A+	8,40	55	Clear
95	HB1P662489VNSTCE	TBD	-	11 400	4000	1-10V driver	61k	66	120	80	350x143x350	-30 to +55	A+	8,40	90	Clear
95	HB1P662571VNSTCE	TBD	-	12 800	5000	1-10V driver	61k	66	135	70	350x143x350	-30 to +55	A+	8,40	120	Clear
95	HB1P662575VNSTCE	TBD	-	12 000	5000	1-10V driver	61k	66	126	70	350x143x350	-30 to +55	A+	8,40	55	Clear
95	HB1P662579VNSTCE	93082491	-	12 400	5000	1-10V driver	61k	66	131	70	350x143x350	-30 to +55	A+	8,40	90	Clear
95	HB1P662581VNSTCE	93087129	-	11 900	5000	1-10V driver	61k	66	125	80	350x143x350	-30 to +55	A+	8,40	120	Clear
95	HB1P662585VNSTCE	TBD	-	11 100	5000	1-10V driver	61k	66	117	80	350x143x350	-30 to +55	A+	8,40	55	Clear
95	HB1P662589VNSTCE	TBD	-	11 500	5000	1-10V driver	61k	66	121	80	350x143x350	-30 to +55	A+	8,40	90	Clear
157	HB1P663471DNSTCE	93073335	-	21 300	4000	DALI driver	61k	66	136	70	350x143x350	-30 to +55	A+	8,20	120	Clear
157	HB1P663475DNSTCE	93084190	-	19 900	4000	DALI driver	61k	66	127	70	350x143x350	-30 to +55	A+	8,20	55	Clear
157	HB1P663479DNSTCE	TBD	-	20 600	4000	DALI driver	61k	66	131	70	350x143x350	-30 to +55	A+	8,20	90	Clear
157	HB1P663481DNSTCE	93069187	-	19 400	4000	DALI driver	61k	66	124	80	350x143x350	-30 to +55	A+	8,20	120	Clear
157	HB1P663485DNSTCE	93076735	-	18 100	4000	DALI driver	61k	66	115	80	350x143x350	-30 to +55	A+	8,20	55	Clear
157	HB1P663489DNSTCE	93076836	-	18 800	4000	DALI driver	61k	66	120	80	350x143x350	-30 to +55	A+	8,20	90	Clear
157	HB1P663571DNSTCE	93069188	-	21 100	5000	DALI driver	61k	66	134	70	350x143x350	-30 to +55	A+	8,20	120	Clear
157	HB1P663575DNSTCE	TBD	-	19 800	5000	DALI driver	61k	66	126	70	350x143x350	-30 to +55	A+	8,20	55	Clear
157	HB1P663579DNSTCE	TBD	-	20 400	5000	DALI driver	61k	66	130	70	350x143x350	-30 to +55	A+	8,20	90	Clear
157	HB1P663581DNSTCE	TBD	-	19 600	5000	DALI driver	61k	66	125	80	350x143x350	-30 to +55	A+	8,20	120	Clear
157	HB1P663585DNSTCE	TBD	-	18 300	5000	DALI driver	61k	66	117	80	350x143x350	-30 to +55	A+	8,20	55	Clear
157	HB1P663589DNSTCE	TBD	-	18 900	5000	DALI driver	61k	66	120	80	350x143x350	-30 to +55	A+	8,20	90	Clear
190	HB1P664471VNSTCE	93087128	-	26 000	4000	1-10V driver	61k	66	137	70	350x143x350	-30 to +50	A+	9,00	120	Clear
190	HB1P664475VNSTCE	TBD	-	24 500	4000	1-10V driver	61k	66	129	70	350x143x350	-30 to +50	A+	9,00	55	Clear
190	HB1P664479VNSTCE	TBD	-	25 300	4000	1-10V driver	61k	66	133	70	350x143x350	-30 to +50	A+	9,00	90	Clear
190	HB1P664481VNSTCE	93069184	-	23 800	4000	1-10V driver	61k	66	125	80	350x143x350	-30 to +50	A+	9,00	120	Clear
190	HB1P664485VNSTCE	TBD	-	22 000	4000	1-10V driver	61k	66	116	80	350x143x350	-30 to +50	A+	9,00	55	Clear
190	HB1P664489VNSTCE	93069185	-	22 600	4000	1-10V driver	61k	66	119	80	350x143x350	-30 to +50	A+	9,00	90	Clear
190	HB1P664571VNSTCE	93069186	-	25 600	5000	1-10V driver	61k	66	135	70	350x143x350	-30 to +50	A+	9,00	120	Clear
190	HB1P664575VNSTCE	TBD	-	24 300	5000	1-10V driver	61k	66	128	70	350x143x350	-30 to +50	A+	9,00	55	Clear
190	HB1P664579VNSTCE	93082490	-	25 100	5000	1-10V driver	61k	66	132	70	350x143x350	-30 to +50	A+	9,00	90	Clear
190	HB1P664581VNSTCE	93085544	-	24 100	5000	1-10V driver	61k	66	127	80	350x143x350	-30 to +50	A+	9,00	120	Clear
190	HB1P664585VNSTCE	TBD	-	22 500	5000	1-10V driver	61k	66	118	80	350x143x350	-30 to +50	A+	9,00	55	Clear
190	HB1P664589VNSTCE	93069189	-	23 200	5000	1-10V driver	61k	66	122	80	350x143x350	-30 to +50	A+	9,00	90	Clear

High bay accessories

HighBay IP66 fixture Bracket kit	93069190
HighBay IP66 fixture Suspension holder kit	93069191
1500MM GRIPPLE PAIR FOR HIGHBAY	93091603
3000MM GRIPPLE PAIR FOR HIGHBAY	93091604
4500MM GRIPPLE PAIR FOR HIGHBAY	93091605
6000MM GRIPPLE PAIR FOR HIGHBAY	93091686



Product ID	Module / Efficiency / Lumen	CCT / CRI	Optic	Control	Options1
------------	-----------------------------	-----------	-------	---------	----------

TU High bay IP66 - High efficiency

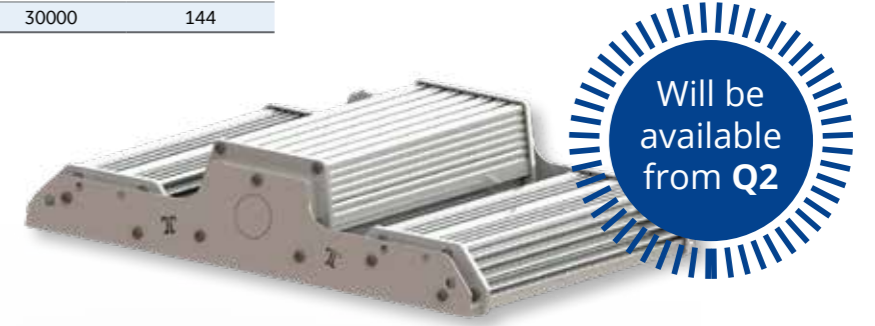
TU HB IP66 G1	1H10 - 1M High 10klm 1H20 - 1M High 20klm 2H30 - 2M High 30klm	4K-4000K 70 CRI70 5K-5000K 70 CRI70 4K-4000K 80 CRI80 5K-5000K 80 CRI80	C1-120° Clear D1-120° Diffuse L9-90° Clear L6-60° Clear L3-30° Clear	DL-DALI RF-RF sensor (Motion and Lux)	ST-Standard EA-EM auto-test
---------------	--	--	--	--	--------------------------------

TU High bay IP66 - Standard Efficiency

TU HB IP66 G1	1S10 - 1M Std 10klm 1S20 - 1M Std 20klm 1S30 - 1M Std 30klm	4K-4000K 70 CRI70 5K-5000K 70 CRI70 4K-4000K 80 CRI80 5K-5000K 80 CRI80	C1-120° Clear D1-120° Diffuse L9-90° Clear L6-60° Clear L3-30° Clear	FX-Fix output DL-DALI SN-Sensor (On/OFF) RF-RF sensor (Motion and Lux)	ST-Standard EA-EM auto-test
---------------	---	--	--	---	--------------------------------

Module / Efficiency / Lumen	5000K 70CRI Clear 120° Optics DALI Driver				CCT/CRI multipliers		Optical multipliers	
	Module	Power(W)*	Lumen	lm/W				
1H10	1	56	10200	182	5K70	100%	C1	100%
1H20	1	116	20100	173	5K80	96%	D1	95%
2H30	2	170	30100	177	4K70	96%	L9	100%
1S10	1	67	10000	149	4K80	95%	L6	100%
1S20	1	147	21300	145			L3	100%
1S30	1	208	30000	144				

* Fix output and sensor versions could have slightly different values



Product Description	GE Product Code	Tungstrom Product Code
---------------------	-----------------	------------------------

TU High bay IP66 - Accessories

TU HB IP20 Bracket kit	-	93108565
1.5m cable Y hook	93091603	-
3.0m cable Y hook	93091604	-
4.5m cable Y hook	93091605	-
6.0m cable Y hook	93091686	-

LED Indoor Solutions / Industrial Fixtures

LED Indoor Solutions / Industrial Fixtures

Product ID	Module / Efficiency / Lumen	CCT / CRI	Optic	Control	Options1
TU High bay IP20 - High efficiency					
TU HB IP20 G1	1H10 - 1M High 10klm 1H20 - 1M High 20klm 2H30 - 2M High 30klm	4K-4000K 70 CRI70 5K-5000K 70 CRI70 4K-4000K 80 CRI80 5K-5000K 80 CRI80	C1-120° Clear D1-120° Diffuse L9-90° Clear L6-60° Clear L3-30° Clear	DL-DALI RF-RF sensor (Motion and Lux)	ST-Standard EA-EM auto-test
TU High bay IP20 - Standard Efficiency					
TU HB IP20 G1	1S10 - 1M Std 10klm 1S20 - 1M Std 20klm 1S30 - 2M Std 30klm	4K-4000K 70 CRI70 5K-5000K 70 CRI70 4K-4000K 80 CRI80 5K-5000K 80 CRI80	C1-120° Clear D1-120° Diffuse L9-90° Clear L6-60° Clear L3-30° Clear	FX-Fix output DL-DALI SN-Sensor (On/OFF) RF-RF sensor (Motion and Lux)	ST-Standard EA-EM auto-test

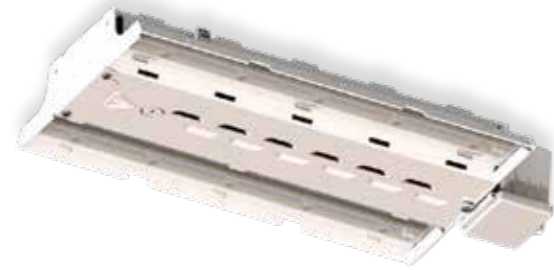
Product ID	Module / Efficiency / Lumen	CCT / CRI	Optic	Control	Options1
TU High bay IP20 - NEDAP IoT Node					
TU HB IP20 G1	1H10 - 1M High 10klm 1H20 - 1M High 20klm 2H30 - 2M High 30klm	4K-4000K 70 CRI70 5K-5000K 70 CRI70 4K-4000K 80 CRI80 5K-5000K 80 CRI80	C1-120° Clear D1-120° Diffuse L9-90° Clear L6-60° Clear L3-30° Clear	NL-Nedap Luxon	ST-Standard
TU High bay IP66 - NEDAP IoT node *					
TU HB IP66 G1	1H10 - 1M High 10klm 1H20 - 1M High 20klm 2H30 - 2M High 30klm	4K-4000K 70 CRI70 5K-5000K 70 CRI70 4K-4000K 80 CRI80 5K-5000K 80 CRI80	C1-120° Clear D1-120° Diffuse L9-90° Clear L6-60° Clear L3-30° Clear	NL-Nedap Luxon	ST-Standard

Module / Efficiency / Lumen	5000K 70CRI Clear 120° Optics DALI Driver				CCT/CRI multipliers		Optical multipliers	
	Module	Power(W)*	Lumen	lm/W				
1H10	1	56	9900	177	5K70	100%	C1	100%
1H20	1	116	19500	168	5K80	96%	D1	95%
2H30	2	170	29200	172	4K70	96%	L9	100%
1S10	1	67	10000	149	4K80	95%	L6	100%
1S20	1	147	21300	145			L3	100%
1S30	1	208	30000	144				

Module / Efficiency / Lumen	5000K 70CRI Clear 120° Optics DALI Driver				CCT/CRI multipliers		Optical multipliers	
	Module	Power(W)	Lumen	lm/W				
1H10	1	56	9900	177	5K70	100%	C1	100%
1H20	1	116	19500	168	5K80	96%	D1	95%
2H30	2	170	29200	172	4K70	96%	L9	100%
					4K80	95%	L6	100%
							L3	100%

* Will be available from April
Additional lumen packs are under development.

* Fix output and sensor versions could have slightly different values



Product Description

GE Product Code

Tungram Product Code

TU High bay IP20 - Accessories		
TU HB FKIT M10 (45 degree)	-	93104725
TU HB IP20 Bracket kit	-	93108564
1.5m cable Y hook	93091603	-
3.0m cable Y hook	93091604	-
4.5m cable Y hook	93091605	-
6.0m cable Y hook	93091686	-





LED Drivers

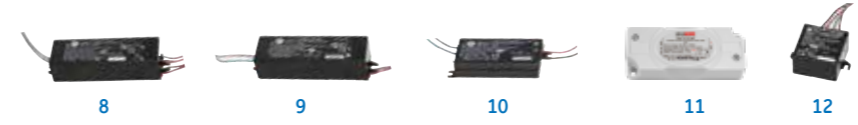


LED Drivers

Model	Power (W)	Product Description	GE Product Code	Tungfram Product Code	Output Voltage (V)	Output Current (A)	Input Voltage (V)	Inrush Current (A)	IP	Efficiency (at full load)	Power Factor	Dimming (down to %)	Max Case temperature (°C)	Dimensions	Pack qty
LED Constant Voltage Drivers															
1	200	OT LED200CV12EMS	97747	-	12	8,3	220-240	2,0	67	92	0,99	No	78,5	211x66x42	20
1	200	OT LED200CV24EMS	97745	-	24	4,2	220-240	2,0	67	92	0,99	No	77,7	211x66x42	20
1	150	OT LED150CV12EMS	97760	-	12	12,5	220-240	2,0	67	92	0,99	No	81,1	211x66x42	20
1	150	OT LED150CV24EMS	97759	-	24	6,25	220-240	2,0	67	92	0,99	No	72,6	211x66x42	20
1	100	OT LED100CV12EMS	97391	-	12	16,6	220-240	2,0	67	92	0,99	No	79,7	211x66x42	20
1	100	OT LED100CV24EMS	97393	-	24	8,3	220-240	2,0	67	92	0,99	No	77,4	211x66x42	20
2	60	OT LED60CV12EPS	97508	-	12	5	220-240	7,4	66	85	0,98	No	80	182x44x40	20
2	60	OT LED60CV24EPS	97506	-	24	2,5	220-240	7,4	66	87	0,98	No	80	182x44x40	20
3	60	OT LED60CV12EP	97509	-	12	5	220-240	7,4	66	85	0,98	No	80	182x44x40	20
3	60	OT LED60CV24EP	97507	-	24	2,5	220-240	7,4	66	87	0,98	No	80	182x44x40	20
4	25	OT LED25CV12EMDS	97742	-	12	2,1	220-240	6,5	65	84	0,95	No	75	133x40x31	24
4	25	OT LED25CV24EPS	97526	-	24	1,1	220-240	6,5	65	86	0,96	No	75	133x40x31	24
5	25	OT LED25CV12EMD	97743	-	12	2,1	220-240	6,5	65	84	0,95	No	75	133x40x31	24
5	25	OT LED25CV24EP	97527	-	24	1,1	220-240	6,5	65	86	0,96	No	75	133x40x31	24
6	12	OT LED12CV12EP	97408	-	12	1,0	120-240	25,2	65	78	0,5	No	65	81x35x23	20
6	12	OT LED12CV24EP	97410	-	24	0,5	120-240	25,2	65	80	0,5	No	65	81x35x23	20
7	12	OT LED12CV12ET	97409	-	12	1,0	120-240	25,2	20	78	0,5	No	70	100x40x27	60
7	12	OT LED12CV24ET	97412	-	24	0,5	120-240	25,2	20	80	0,5	No	70	100x40x27	60

Model	Power (W)	Product Description	GE Product Code	Tungfram Product Code	Output Voltage (V)	Output Current (A)	Input Voltage (V)	Inrush Current (A)	IP	Efficiency (at full load)	Power Factor	Dimming (down to %)	Max Case temperature (°C)	Dimensions	Pack qty
LED Constant Current Drivers															
8	48	OT LED48CC1050EPDL	97514	-	12-46	1,05	220-240	6,7	65	89	0,92	0-10V (10%)	80	133x40x31	24
8	36	OT LED36CC700EPDL3	97520	-	12-48	0,7	220-240	6,7	65	89	0,97	0-10V (10%)	80	133x40x31	24
8	18	OT LED18CC350EPDL	97757	-	12-48	0,35	220-240	6,7	65	87	0,96	0-10V (10%)	80	133x40x31	24
9	48	OT LED48CC1050EPD	97513	-	12-46	1,05	220-240	6,7	66	89	0,98	TE (25 %)	85	133x40x31	24
9	36	OT LED36CC1050EPD	97522	-	12-35	1,05	220-240	6,7	66	89	0,98	TE (25 %)	85	133x40x31	20
9	36	OT LED36CC700ETD	97516	-	12-52	0,7	220-240	20	89	0,97	TE (25 %)	85	133x40x31	24	
9	36	OT LED36CC700EPD	97519	-	4-52	0,7	220-240	6,7	66	89	0,97	TE (25 %)	85	133x40x31	24
9	36	OT LED36CC700EPDS	97517	-	4-52	0,7	220-240	6,7	66	89	0,97	TE (25 %)	85	133x40x31	24
9	36	OT LED36CC700EPL	97518	-	4-52	0,7	220-240	6,7	66	89	0,97	TE (25 %)	85	133x40x31	24
9	26	OT LED26CC500EPD	97524	-	12-52	0,5	220-240	6,7	66	87	0,97	TE (25%)	85	133x40x31	24
9	18	OT LED18CC700EPD	97749	-	2-26	0,7	220-240	5,4	66	83	0,95	TE (25 %)	80	133x40x31	24
9	18	OT LED18CC350EPDS	97752	-	4-52	0,35	220-240	5,4	66	85	0,96	TE (35 %)	80	133x40x31	24
9	18	OT LED18CC350EPD	97756	-	4-52	0,35	220-240	5,4	66	85	0,96	TE (35 %)	80	133x40x31	24
10	18	OT LED18CC700EPM	97750	-	2-30	0,7	220-240	No limiter	65	83	0,4	No	70	81x35x23	20
10	18	OT LED18CC350EPM	97753	-	3-55	0,35	220-240	No limiter	65	83	0,4	No	70	81x35x23	20
10	12	OT LED12CC700EP	97404	-	2.3-18	0,7	120-240	No limiter	65	79	0,5	No	65	81x35x23	20
10	12	OT LED12CC500EP	97402	-	2.3-26	0,5	120-240	No limiter	65	79	0,5	No	65	81x35x23	20
10	12	OT LED12CC350EP	97399	-	2.3-35	0,35	120-240	No limiter	65	80	0,5	No	65	81x35x23	20
11	12	OT LED12CC500ET	97403	-	2.3-26	0,5	120-240	No limiter	20	79	0,5	No	70	100x40x27	60
11	12	OT LED12CC350ET	97401	-	2.3-35	0,35	120-240	No limiter	20	80	0,5	No	70	100x40x27	60
12	6	OT LED6CC700EP	97435	-	2-9	0,7	120-240	No limiter	65	70	0,5	No	70	45x45x25	20
12	6	OT LED6CC500EP	97500	-	2-13	0,5	120-240	No limiter	65	70	0,5	No	75	45x45x25	20
12	6	OT LED6CC350EP	97504	-	2-17	0,35	120-240	No limiter	65	70	0,5	No	75	45x45x25	20
12	6	OT LED6CC350EPS	97502	-	2-17	0,35	120-240	No limiter	65	70	0,5	No	75	45x45x25	20

LED Drivers



Unique LED lighting in a sports hall of Kecskemét

The project has been requested by KTE Kosárlabda Klub Ltd, an outstanding basketball club of Kecskemét, which is Hungary's eighth most populous city. The city owns an excellent sports facility, the Messzi István Sports Hall what is a place for domestic and even international competitions and where the team plays their basketball matches regularly. It has three standard courts that match IHF, EHF handball, FIBA basketball and CEV, FIVB volleyball court international classifications. The sports hall is suitable for television broadcasts and it has 1830 seats, 200 stands and 6 VIP lodge. The investment was implemented by the KTE Kosárlabda Klub Ltd. within the framework of TAO's sports development program, in cooperation with the owner of the sports hall, the County Municipality of Kecskemét



Aman retail shops in Serbia

Aman Company Ltd. is a developing and growing company, it was founded in Belgrade in 1992. Since then its main occupation has been trading and providing services for customers. In 2008 it started expanding and increasing the number of retail stores in Belgrade and surrounding areas. Besides success, the company strongly focuses on the modernization of its lighting system in the shops and achieving energy savings. Aman places great importance on energy efficiency, which determined the aim of the innovation. As lighting technology develops the performance of the fixtures becoming more significant. The great efficiency, photometry and design of the GE LED products played a major role in the choice of the company to change the outdated fixtures in six retail shops across Serbia.



Powerful LED lighting solutions for Slovenia's first sand sports park

The project has been requested by the owner of Ludus Črnuče Sport Park in Ljubljana. The modern recreational complex which was developed in a public-private partnership between the City of Ljubljana and the Ludus Company occupies 18,800 square meters and has several outdoor volleyball courts, a small football field, tennis and minifootball courts and a picnic area as well as the first hall for sand sports (i.e. beach volleyball, beach soccer beach handball and other recreational activities) in Slovenia. The owner found a reliable partner in Tungram and asked us to propose and implement the best lighting solution for their indoor and outdoor volleyball courts. We proposed a modern and cost-effective high-performance LED lighting system.



Ljubljana LED Residential Lighting

Javna razsvetljava d.d. is the largest Slovenian company engaged in outdoor lighting and traffic signs. The work of the company is focused on the maintenance of public lighting in Ljubljana and other parts of Slovenia. Since the main goal of the company is to maintain the high quality of the lighting system in the city, they found it necessary to upgrade the traditional fixtures to LED solutions. The sodium and CFL lamps had been in the city, but with the passing of time the previously installed fixtures became outdated. As an alternative new GE LED products have been chosen by the city in order to change the 10-15 years old fittings and reach better energy savings. The innovation of the lighting system has been realized with more than 10.000 LED SMBt and SLBt in Ljubljana and other Slovenian cities.





tungram.com

TUNGSRAMTM

Innovation is our heritage
EST. 1896

LED Indoor
Product Catalogue
February 2019

We in Tungram Operations Kft. are constantly developing and improving our products. For this reason, all product descriptions in this catalogue are intended as a general guide, and we may change specifications from time to time in the interest of product development, without prior notification or public announcement. All descriptions in this publication present only general particulars of the goods to which they refer and shall not form part of any contract. Data in this guide has been obtained in controlled experimental conditions. However, Tungram cannot accept any liability arising from the reliance on such data to the extent permitted by law.